

marginal lines sinuate between and diverging in front and rear of coxæ. Front femora about one third as wide as long.

Type and the single paratype taken from a nest of *Formica rufibarbis* var. *occidentalis* Wheeler, at Stanford University, California.

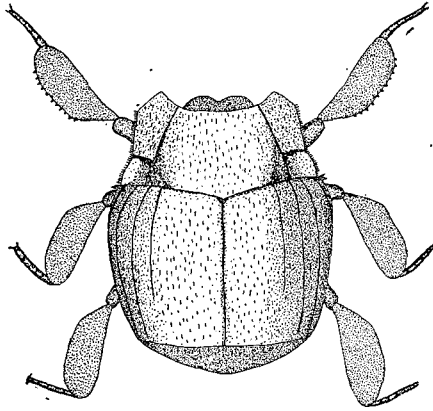


Fig. 1. *Hetariius wheeleri*, sp. nov.

The size, structure of prothorax and the scattered, recumbent hairs will separate this species from those near it.

There are eleven denticles on the outer edge of the anterior tibiæ. The number seems to vary among the different species, but to be fairly constant in the same one and may be of some taxonomic importance.