

specimen each of *Hetaerius tristriatus* and *Cremastochilus knochii* were taken with this ant at Wenatchee.

Formica camponoticeps Wheeler.—The only nest found was under a flat stone at Wawawai, March 28, 1909. In the nest were two remarkable, soft-bodied Coleopterous larvæ, which I have been unable to determine definitely, though they are probably Coccinellidæ. These larvæ (fig. 1) were in the runways of the nests. In life they were covered densely with a white powder, and some of this remains after an immersion of two years in alcohol. The alcoholic specimens are 6–7 mm. in length; 2.5 mm. greatest width, 2.25 mm. at greatest height.

Componotus maculatus subsp. **vicinus** Mayr.—One specimen of *Xenodusa montana*, (?) Casey, taken at Helena, Montana, April 16, 1907.

Camponotus herculeanus subsp. **pennsylvanicus** De Geer. *Myrmecophila formicarum* was abundant with this ant on San Juan Island, Wash., in July.

Camponotus maccooki Forel.—Mr. C. M. Keyes sent me this species from Medford, Oregon, and with it several specimens of *Myrmecophila formicarum*.

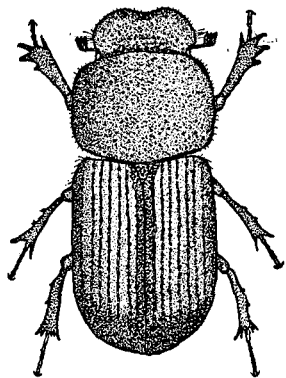


Fig. 2. *Aphodius suspectus* sp. nov.

Aphodius suspectus sp. nov.

Length 4 to 5 mm., oblong black, shining. Head coarsely punctate, some of the punctures on the front confluent; a narrow transverse impunctate ridge, extending transversely across the head at about one third distance from base; in front of this ridge depressed, then elevated to a low flat tubercle; depressed between this and margin; margined for entire length, margin with row of fine hairs, which end in front of eyes in a brush of longer hairs; front with a few fine, short hairs; clypeus shallowly emarginate. Prothorax broader than long, feebly narrowed behind, at base slightly wider than elytra; sides moderately margined; base with feeble marginal line; sides slightly convex, disc shining, convex, strongly punctate, the punctures arranged unevenly, and varying in size; a longitudinal impunctate line at middle of disc, running entire length of disc; margin with a row of short even hairs; a few fine scattered hairs on disc.

Elytra brownish, $1\frac{2}{3}$ as long as prothorax, brownish yellow, apex brown; suture and margin sometimes brown; sides nearly straight for one half distances from base, then gradually rounded to apex; striae, moderately impressed, the outer three