

of the known American species. It appears to be nearest to *H. minimus* Fall, from which it differs in the inconspicuous punctation and pubescence, the narrow femora and more concave front. In these characters it approaches *H. brunneipennis*. It can be separated from this species by the smaller size, more elongate body and total absence of long yellow hairs. In *brunneipennis*

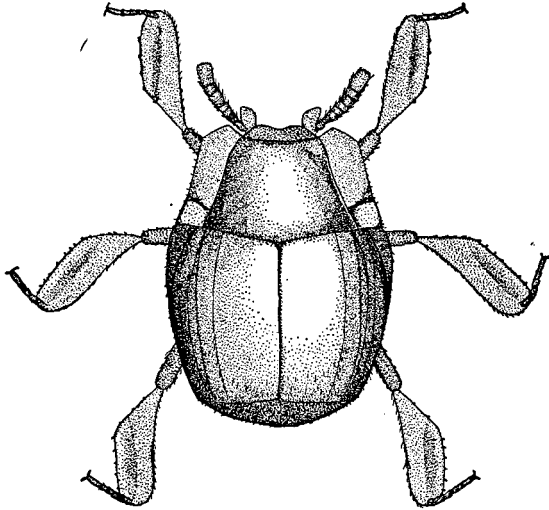


Fig. 3. *Haterius exiguus* sp. nov.

the margin of the pronotum is more noticeably punctured than the disc, while in *minimus* and *exiguus* there is no appreciable difference.

In the same specimens the elytral hairs are more noticeable and can be seen the entire length of the striæ, becoming stronger posteriorly. There exists a wider variation in color than is common in the genus. The elytra and pronotum are seen to be irregularly punctate.