

Fustiger cribratus sp. nov.

(Fig. 4.)

Male: Length 1.10 mm.

Dark brown, almost black. Head prothorax and elytra finely cribrately punctate and with microscopic recumbent hairs; abdomen, in addition to similar minute hairs with six long, fine and erect hairs.

Head less than twice as long as broad, as broad behind eyes as in front. Antennæ twice as long as head, slender, clavate and compressed apically. Prothorax a little longer than broad, sides rather strongly

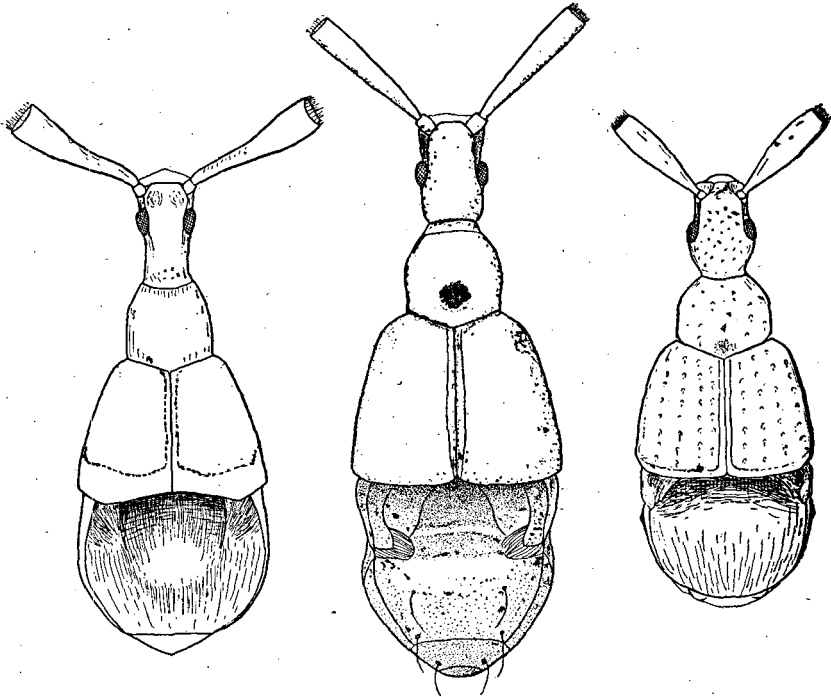


Fig. 3.

Fustiger vitiensis.

Fig. 4.

Fustiger cribratus.

Fig. 5.

Fustiger leuanus.

convex at middle, straight behind, dorsal surface with a strong circular impression at middle near base. Elytra together distinctly longer than broad, sides convex, apical corners rounded, sutural striæ strong. Abdomen narrow; pit short and deep with strongly sloping posterior surface, lateral anterior lobes elongate, well defined, excavated beneath, with fascicle at the tip composed of short hairs; posterior portion of abdomen convex, strongly margined at sides. Anterior femora strongly swollen at middle of inner edge. Spines of middle femora thick basally, then slender and acuminate apically, strongly curved.

Viti Levu: Nadarivatu.