

anterior border of the mesonotum, which forms a strongly projecting transverse welt or gibbosity cleft, or is impressed in the center (fig. 8, b); and by epinotal spines, which are highly characteristic in being unusually long and acute, as long as or longer than the declivous face of the epinotum, and with their apices directed considerably upward. The general body color is usually light brown to dark brown, the gaster and appendages often being darker.

Biology and Economic Importance

This species nests in small- to moderate-size colonies in rotting wood, such as logs or stumps, and in the soil beneath stones and other objects. It is very characteristically found in wooded areas, but also shows a high adaptability to various types of ecological habitats. Van Pelt reports occasional colonies of this species in the Blue Ridge Mountains at altitudes of from 3,500 to 4,500 feet. The natural food of *fulva* is live and dead insects. Workers are not known to seek or eat honeydew. The ants have been found nesting in the soil around the base of houses and in the rotting wood of houses. Although workers infest houses, I have only one record of their infesting household foods; that was peanut butter. Probably they will show a preference for meat or food with a high protein content. The species does not appear to be a house pest of any major importance.

References: Wheeler, 1905b, pp. 373, 383; Wheeler, 1916, pp. 585-586; Wheeler, 1926, pp. 81, 83, 206, 448, 453; Dennis, 1938, pp. 285-286; Headley, 1943, p. 25; Van Pelt, 1958, pp. 12-13; Van Pelt, 1963, p. 212.

Pheidole bicarinata vinelandica Forel

This is a native species, which ranges from Nebraska to New York and south to Arizona and Florida.

Taxonomic Characters

Subfamily and generic characters: Dimorphic. Head extraordinarily large in proportion to body, with prominent occipital lobes and a frontal furrow. Antenna 12-segmented, with a distinct 3-segmented

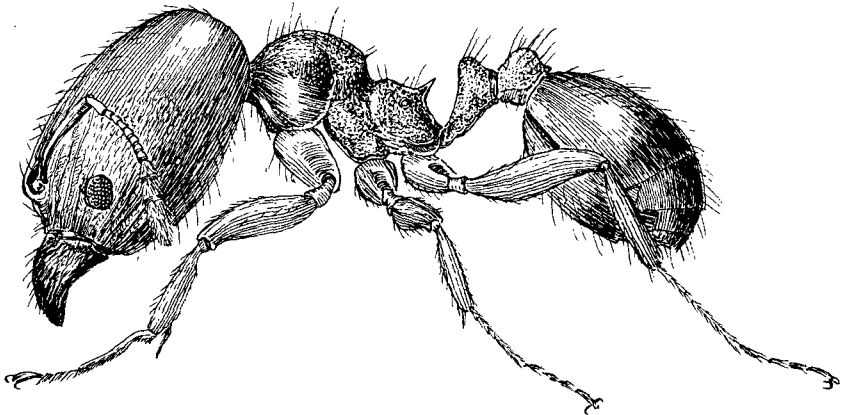


Figure 9.—*Pheidole bicarinata vinelandica* Forel, lateral view of worker.