

ants have been found in various parts of houses such as the roof, siding, ceiling, and porch, but most commonly in and around door and window frames, where any caste or combination of castes may appear. Some correspondents insist that the ants have done appreciable damage to the woodwork, but others maintain they can detect no damage. In some instances the ants seem to occupy, and perhaps enlarge, preformed cavities in the wood made by other insects. Although the ants feed on various household foods, I have no definite information on their food preferences. On one occasion specimens were reported to have caused a short circuit in an electric transformer by removing the insulation. This ant may be an intermediate host of the poultry tapeworm *Raillietina tetragona* (Molin); worker ants have been seen carrying gravid tapeworm segments into their nest.

References: Gaige, 1914, pp. 3-4, 8-9; Talbot, 1934, p. 420; Case and Ackert, 1940, pp. 393-395; Amstutz, 1943, p. 168; Wheeler and Wheeler, 1944, p. 245; Gregg, 1944, pp. 456, 462; Talbot, 1957, pp. 376-378, 381; Kanno, 1959, pp. 125, 157; Van Pelt, 1963, p. 212.

Crematogaster clara Mayr

This native species ranges from Indiana to New Jersey and south to Texas and Florida. It is common in the lower Mississippi Valley. In earlier literature the species has been recorded erroneously as *laeviuscula* Mayr.

Taxonomic Characters

Subfamily and generic characters: Same as for *ashmeadi*. *Specific characters:* Workers 3.3-4 mm. long. Scape rather long when fully extended, usually noticeably surpassing posterior border of head. Head shiny except for the areas dulled by the sculpturing on cheeks and clypeus. Mesonotum with median carina. Mesoepinotal impression well defined. Dorsum of thorax (promesonotum) with very fine sculpture, largely punctulations; the area subopaque or shiny, especially when viewed with varying brightness or direction of light. Side of thorax sculptured and subopaque except for that of prothorax,

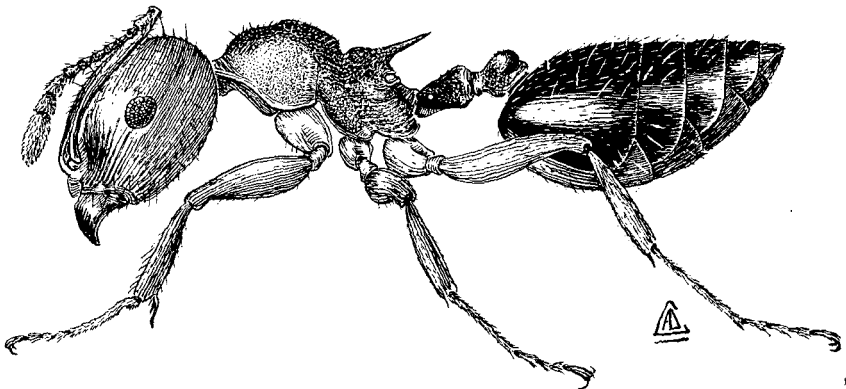


Figure 14.—*Crematogaster clara* Mayr, lateral view of worker.