

the ants are known to feed on jelly, sugar, syrup, and other sweets, cakes and breads, pies, butter, liver, and bacon. They seem to have a preference for grease, fats, and meats. Workers feed on both dead and live insects. Very often they appreciably damage insect collections by feeding on dried specimens. Reports have been received of ants gnawing holes in silk, rayon, and rubber goods. The Pharoah ant is without doubt the most persistent and difficult of all our house-infesting ants to control or eradicate. The success of this species is probably due to their many reproductive females, their ability to breed the year around, their accessibility to an unlimited amount of food, and to the fact that females do not have to expose themselves to the elements or enemies by traveling great distances to find suitable nesting sites. Numerous daughter colonies apparently are produced by a splitting or budding process from an original mother colony, since no nuptial flights have been observed. A spread of many miles would therefore have to be accomplished by man. Those especially interested in the biology and control of this species should consult Peacock et al. (1950).

*References:* Bellevoys, 1889, pp. 230-233; Marlatt, 1898, pp. 1-2 fig.; Herrick, 1914, pp. 173-176, fig.; Donisthorpe, 1927, pp. 103-109, fig.; Smith, 1934, pp. 139-149; Metcalf and Flint, 1939, p. 770; Peacock and Baxter, 1950, pp. 171-178; Peacock, Hall, Smith, and Goodfellow, 1950, pp. 1-50; Sudd, 1953, pp. 17-18.

### *Monomorium floricola* (Jerdon)

This is an introduced species whose original home appears to be the African or Oriental Region, probably the latter. It is now established in a number of localities in Alabama and Florida, especially the latter State.

#### Taxonomic Characters

*Subfamily and generic characters:* Same as for *minimum*. *Specific characters:* Workers 1.4-1.8 mm. long. Body unusually slender. Clypeal teeth apparently absent or obsolescent. Gaster much narrowed basally (best seen from above). Body largely smooth and shiny except for sculpturing on cheeks, clypeus, and mesometapleuron. Body hairs and pubescence sparse; pubescence appressed, scarcely discernible. Body strikingly bicolored, head and gaster dark brown or

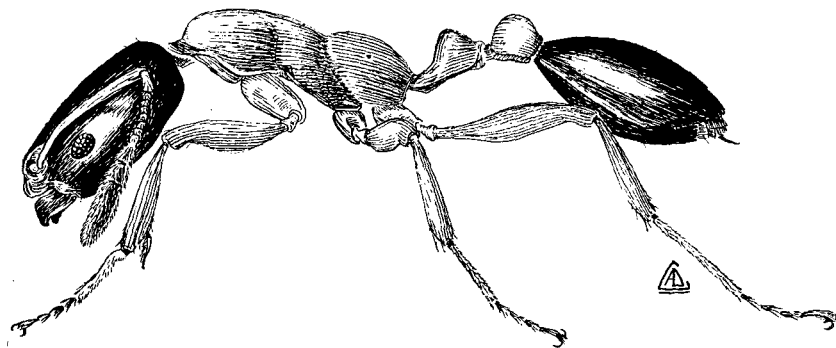


Figure 18.—*Monomorium floricola* (Jerdon), lateral view of worker.