

with a high fat content. The ants are a great annoyance to housekeepers because of their extremely small size, which allows them to enter containers not accessible to larger ants. The workers are well adapted for infesting cabinets, shelves, and containers, and often do so even though the housekeeper has been unusually careful to keep everything closed and scrupulously clean. Unverified reports indicate that females may bite or sting people in bed at night. This species may be an intermediate host of the poultry tapeworm *Railbretina tetragona* (Molin); worker ants have been seen carrying gravid segments of the tapeworm into their nest.

*References:* McColloch and Hayes, 1916, pp. 23-38; Hayes, 1920, pp. 1-54, figs.; Metcalf and Flint, 1939, pp. 389, 770; Case and Ackert, 1940, pp. 393-395; MacNamara, 1945, p. 40; Smith, 1950, p. 269; Van Pelt, 1963, p. 212.

### *Tetramorium caespitum* (Linnaeus)

Pavement ant. This introduced species was undoubtedly brought into the United States by the early colonists from Europe. The ants are most common in cities and towns of the Atlantic Seaboard States, but are more sparsely distributed inland except in large centers of commerce, such as Cincinnati and St. Louis. Although not primarily an urban species, *caespitum* is confined largely to metropolitan areas in the United States. In Washington, D.C., and its metropolitan area, the species is not only one of the most common, but probably the predominant, house-infesting ant.

#### Taxonomic Characters

*Subfamily and generic characters:* Monomorphic. Head subquadrate or subrectangular, with emarginate posterior border. Frontal carinae placed far apart but partly concealing antennal insertions. Antenna 12-segmented, with 3-segmented club. Posterior border of clypeus forming a sharp ridge or rim in front of antennal fossa. Pronotum (viewed from above) with angular shoulders. Promesonotal suture absent or obsolescent. Epinotum with a pair of spines of

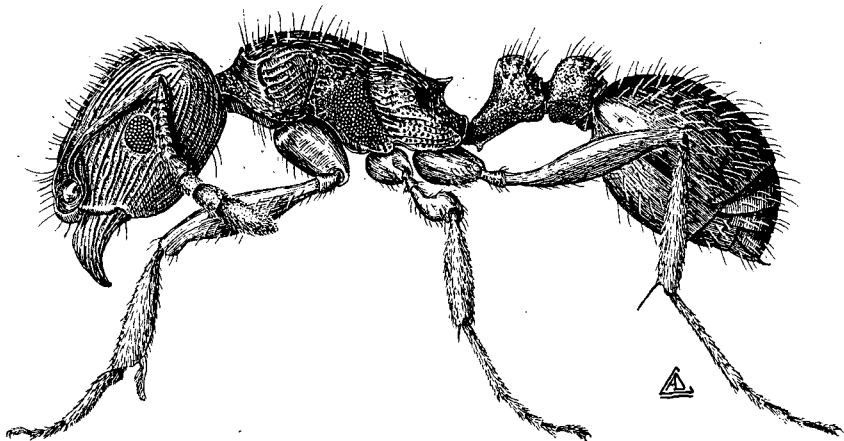


Figure 24.—*Tetramorium caespitum* (Linnaeus), pavement ant, lateral view of worker.