

done considerable damage to standing white cedar in Minnesota by gaining entrance through a decayed or wound spot and mining out both faulty and sound wood for considerable distance.³

My unpublished records indicate that although workers, males, and females, singly or in various combinations, have been observed in houses, only in a few instances have actual nests been located, and then only in faulty or moist wood, especially that which has been subjected to water damage. I have no record of household foods eaten by these ants; nor have I been able to locate any published information on the subject.

References: Pricer, 1908, pp. 177-218; Graham, 1918, pp. 32-40; Wesson and Wesson, 1940, pp. 90, 103; Cole, 1940, pp. 30, 86; Gregg, 1946, p. 753 (footnote); Brown, 1950, pp. 158-161.

Camponotus abdominalis floridanus (Buckley)

Florida carpenter ant. A native ant which ranges from Alabama and Horn Island (off the coast of Mississippi) east to North Carolina and Florida. This subspecies, although widely distributed in Florida, apparently does not occur very far inland in the other States from which it has been reported. It is one of the common, if not the most common, *Camponotus* species in Florida. *C. abdominalis* (F.) is a well-known neotropical ant, which is so highly variable that it has produced many subspecies.

Taxonomic Characters

Subfamily and generic characters: Polymorphic. Antenna articulated at a considerable distance from the posterior border of the clypeus. Antennal fossa not touching the posterior border of the clypeus. Antenna 12-segmented, without a club. Scape flattened basally; very much broadened throughout except basally. Frontal carinae not placed close together, lyrate in shape. Clypeus largely in the form of a lobe,

³ Both Gregg and the author think that Graham may have confused *pennsylvanicus* and *ferrugineus* with *Camponotus herculeanus* (L.) and *C. noveboracensis* (Fitch).

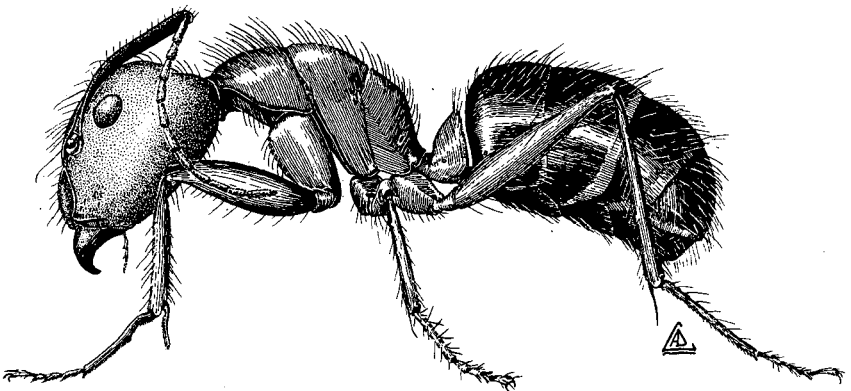


Figure 37.—*Camponotus abdominalis floridanus* (Buckley). Florida carpenter ant, lateral view of worker.