

externally on their bodies. Close examination under a microscope reveals them to be a parasitic fungus, *Laboulbenia formicarum* Thaxter. So far as I am aware, the fungus has no appreciable effect on the ant's vitality.

References: Forbes, 1908, pp. 31-44, figs.; Tanquary, 1913, pp. 417-443; Severin, 1920, pp. 1-9; Metcalf and Flint, 1939, pp. 371-374, 770; Talbot, 1945, pp. 504-506; Talbot, 1946, pp. 65-70; Schread and Chapman, 1948, p. 4; Talbot, 1953, pp. 3-12; Wilson, 1955, pp. 97-104; Orlob, 1964 (1963), pp. 95-106.

Lasius umbratus (Nylander)

According to Wilson, this species is native to both Eurasia and North America. It ranges from Nova Scotia to the Gulf Coast, but is rare in the latter region, fairly common in the southern Rocky Mountains, but sparse or absent over most of western North America; there are no records of it from British Columbia, northern Idaho, or northern California. It is the form that has passed in previous American literature as a variety or subspecies of *umbratus* under the name of *aphidicola* (Walsh).

Taxonomic Characters

Subfamily and generic characters: Same as for *alienus* except as follows: Eye with approximately 12 ommatidia in its greatest diameter. Antenna 12-segmented, the segments gradually increasing in size toward the apex of the funiculus but not forming a distinct club. Apex of scape surpassing posterior border of head by less than one-third the length of scape. Maxillary palpus with apical segments noticeably decreasing in length. Thorax rather short, stout. Declivity of epinotum at least twice as long as base of epinotum. Petiolar node in profile very narrow or thin, tapering from base to apex. Base of gaster scarcely, or not at all, impressed. *Specific characters:* Workers 3.3-3.7 mm. long. Scapes and tibiae normally without erect or suberect hairs. Dorsal surface of gaster with numerous, well-distributed, short, suberect hairs. Body pubescence short, closely appressed, apparently

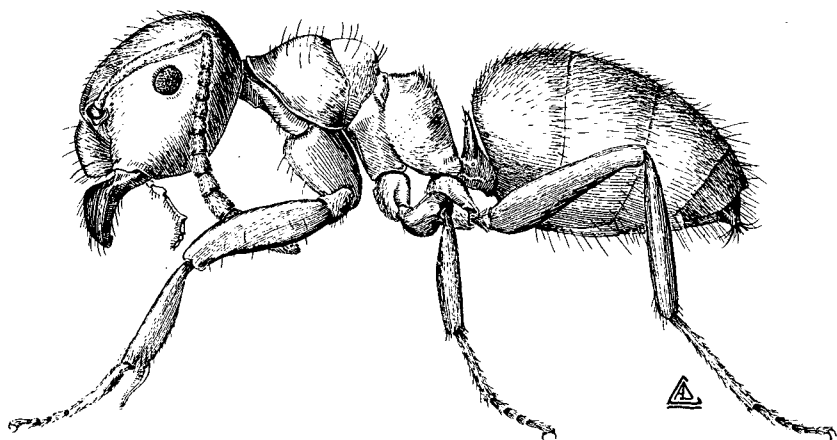


Figure 46.—*Lasius umbratus* (Nylander), lateral view of worker.