

Acanthomyops interjectus (Mayr)

Larger yellow ant. A native species, *interjectus* ranges from Washington to Ontario and south to New Mexico and Florida. The species is more common in the eastern and central United States. This ant has occasionally been called the perfumed yellow ant.

Taxonomic Characters

Subfamily and generic characters: Same as for *claviger*. *Specific characters:* Workers 4–4.5 mm. long. Superior border of mandible with a small but distinct tooth, which is borne near junction of masticatory and superior borders of mandible (fig. 48,b). Apex of scape distinctly surpassing posterior border of head. Penultimate segments of funiculus not broader than long. Petiole with a high node which in profile is rather narrow and sharp at summit. Dorsum of gaster with long, suberect to erect hairs, which are largely confined to first gastric segment and to posterior border of each of the succeeding segments, where they form distinct transverse rows.

Biology and Economic Importance

Unfortunately no complete biological study has been made of *interjectus*, although it is one of our largest and most common species of *Acanthomyops*. Numerous but scattered observations indicate that the ants form rather populous colonies, which nest in the exposed soil or under the cover of stones or other objects, and in rotting logs and stumps. The nests in exposed soil are usually mounds, frequently quite large, especially in Illinois and Wisconsin. The ants commonly nest in wooded areas, as well as in pastures, meadows, grassy fields, and in or around the foundation walls of houses and other buildings. It is believed that males and winged females can overwinter in some of the parental nests, and make their nuptial flights the following spring, about late March or early April. It is also quite likely that winged forms produced during a given season must reach maturity by early to late summer, and make nuptial flights shortly thereafter.

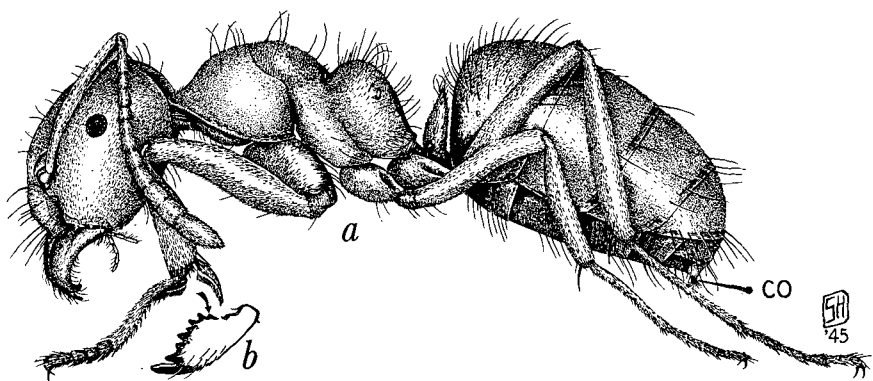


Figure 48.—*Acanthomyops interjectus* (Mayr), larger yellow ant: a, Lateral view of worker; b, left mandible showing small tooth on the superior border near the junction of the masticatory and superior border; co, the terminal orifice, which is surrounded by a fringe of hairs.