

of evidence was found to substantiate this. On August 22, 1961 a small mixed colony of *A. murphyi* and *Lasius neoniger* containing *A. murphyi* worker pupae was found under a stone set firmly into a hillside. Part of the mixed colony was kept alive in the laboratory for several days. Whenever the container was opened, workers of *Lasius* and *Acanthomyops* cooperated in carrying pupae out of the light. A week after I made the collection, the mixed colony was still there. Aside from this, I have seen no evidence of colony founding in my ten years at the reserve."

A. murphyi has the same general house-infesting habits as *interjectus*, but apparently is much less common in this respect than *interjectus* and *claviger*. Our unquestionable records show that *murphyi* has been collected in houses mostly during June, July, and August. An observer noted that the purple grackle, *Quiscalus quiscula* (Linnaeus), used workers and winged females of this species in "anting."

References: Forel, 1901, p. 369; Wheeler, 1905b, p. 398; Vickery, 1910, p. 105; Wheeler, 1917a, p. 530; Creighton, 1950, p. 432.

Acanthomyops latipes (Walsh)

This native species ranges from Alaska and Quebec south to New Mexico and South Carolina. It is widely but apparently sporadically distributed, and is most common in the eastern and central United States, although less common in the Eastern States than *claviger* and *interjectus*. Creighton (1950) states that the species is not common south of the latitude of Pennsylvania.

Taxonomic Characters

Subfamily and generic characters: Same as for *claviger*. *Specific characters:* Workers 3.5–3.75 mm. long. Head subrectangular, longer than broad, with slightly emarginate posterior border. Scape rather short, when fully extended its apex either scarcely attaining or barely surpassing posterior border by less than greatest width of scape. Funiculus noticeably enlarged through segments 6–11, only the first

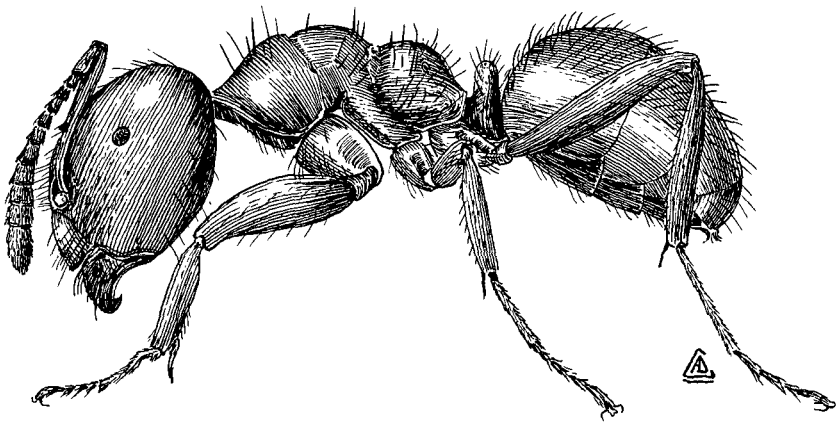


Figure 50.—*Acanthomyops latipes* (Walsh), lateral view of worker.