

though single nests of the *Myrmica* were frequently found. My observations were therefore to be confined to only one nest.

The worker of *Myrmica brevinodis*, which I shall not pause to describe, is represented in Fig. 1. The *Leptothorax*, however,

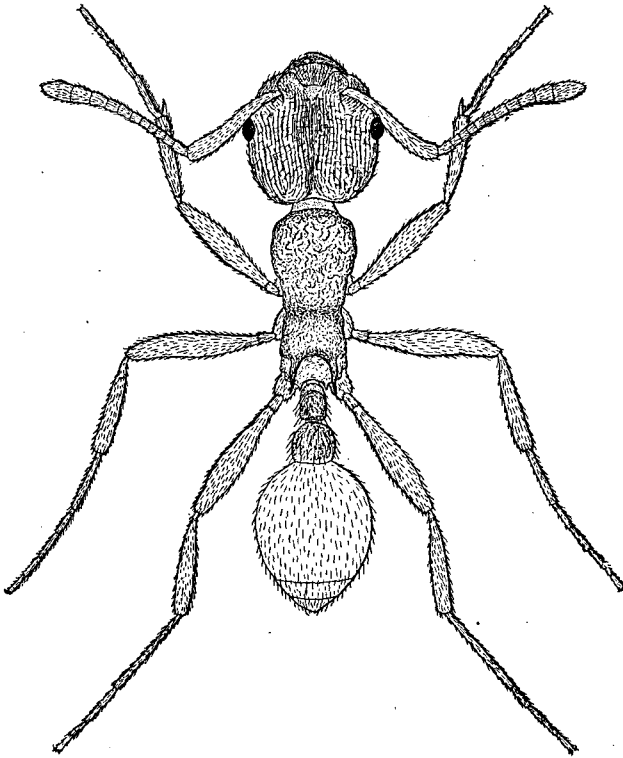


FIG. 1.—*Myrmica brevinodis* Emery. Worker.

is of greater interest in this connection and certainly merits a description before we proceed with any observations on its behavior.

***Leptothorax emersoni* n. sp.¹**

Worker (Fig. 2). Length 2.5–3.5 mm.

Brownish yellow; upper surface of the head except the mandibles, clypeus, and a narrow postclypeal and occipital

¹ I take pleasure in dedicating this species to Mr. Ralph Emerson in memory of the many happy hours which we spent together at Rockwell Hall in Colebrook.