

In some small specimens the whole body excepting the mandibles and anterior portion of the head, is uniformly infuscated.

*Female* (Fig. 1, — Length, 6–8 mm. Mandibles 8-toothed. Clypeus with broadly rounded anterior border, not produced, indistinctly carinate. Antennæ rather slender. Head, excluding the mandibles, hardly longer than broad, decidedly narrower in front than

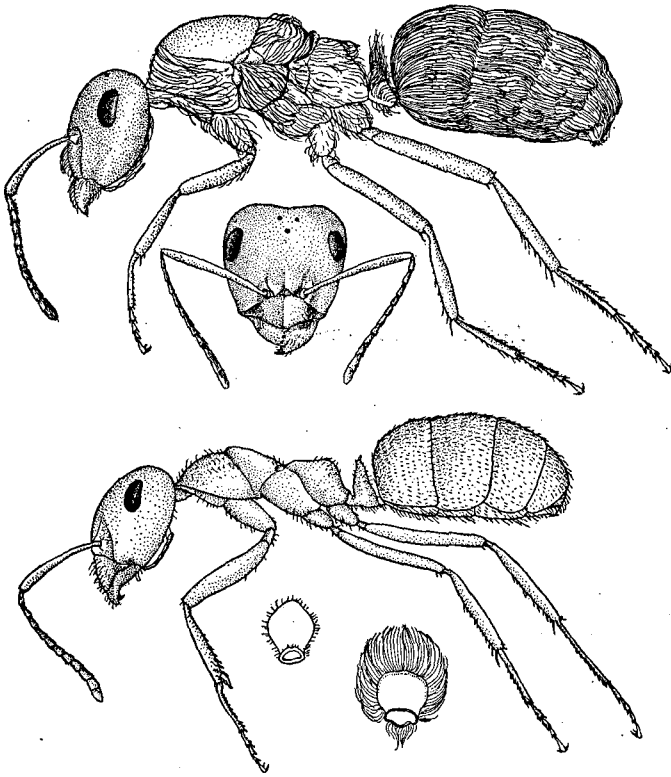


Fig. 1. *Formica ciliata* Mayr. Female (decalated) and worker in profile; head of worker (frontal view); petiole of worker and female from behind. This and the following figures are all drawn to the same scale.

behind, occipital border nearly straight. Thorax rather small, somewhat narrower than the head. Petiole broadly rounded above, scale not produced in the mid-dorsal line as in the worker; posterior and anterior surfaces as in the worker, edge sharp.

Mandibles subopaque, striato-punctate. Body and appendages smooth and shining, especially the head, mesonotum and scutellum, which are very glabrous.

November, 1903.]