

peus convex, rounded in front, indistinctly carinate. Head, excluding the mandibles, as broad as long, sides converging anteriorly, posterior corners prominent, rounded, occipital border nearly straight. Thorax nearly as broad as the head, robust. Petiole broad, compressed anteroposteriorly; in profile faintly convex in front, flattened

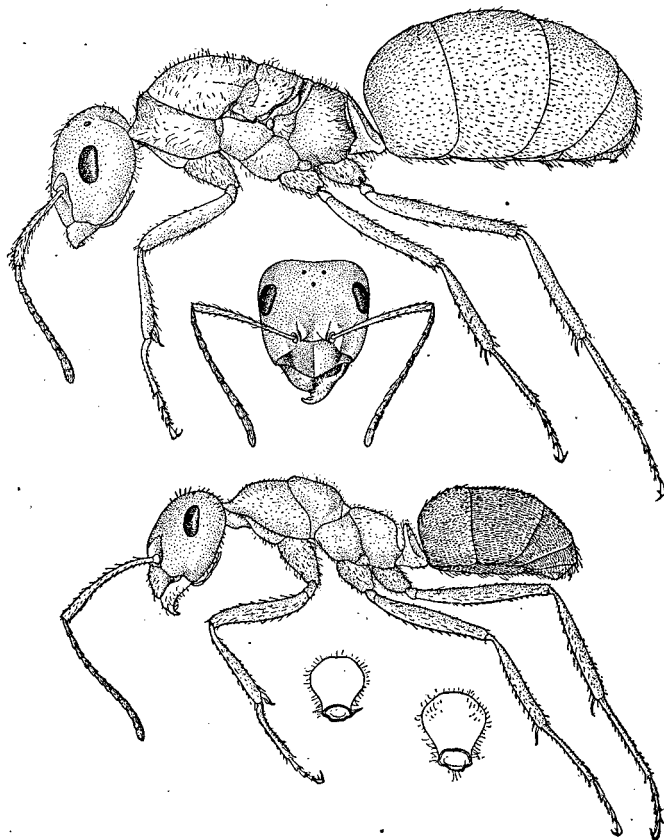


Fig. 2. *Formica oreas* n. sp. Female (deâlated) and worker in profile; head of worker (frontal view); petiole of worker and female from behind.

behind; seen from behind, the rather sharp border is depressed and horizontal in the middle and truncated on the sides. Gaster and legs of the usual conformation.

Mandibles striatopunctate, subopaque. Body and appendages smooth and shining, especially the upper surface of the head, mesonotum, and scutellum, which are highly glabrous.