

and suberect on the frontal and lower surfaces of the head, on the thorax, petiolar border, gaster, antennal scapes, and legs. In addition to these hairs the body and appendages are invested with microscopic white pubescence.

Head, thorax, petiole, and legs dull, reddish yellow. Mandibular teeth, funiculi, a blotch covering the ocellar region, a large antero-

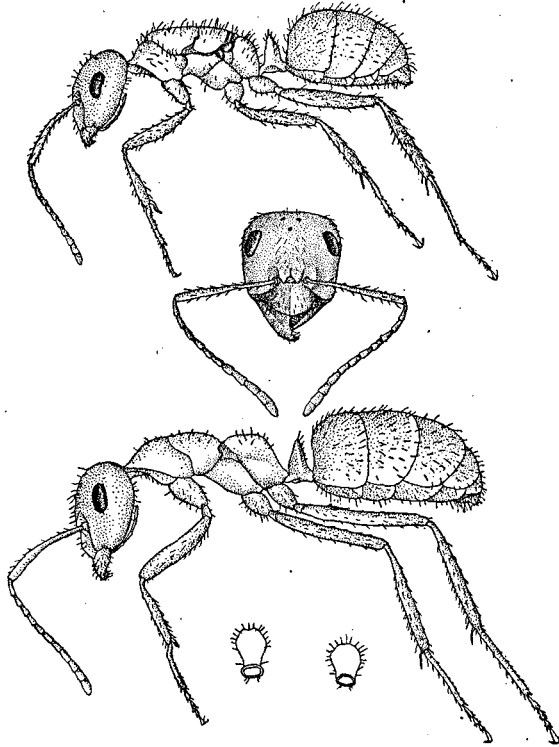


Fig. 3. *Formica microgyna* n. sp. Female (decalated) and worker in profile; head of worker (frontal view); petiole of worker and female from behind.

median mesonotal, two elongate parapsidal blotches, alar insertions, metanotum, and more or less of the adjacent portion of the scutellum, fuscous. In some specimens the clypeus, frontal region, coxæ, and pleuræ are infuscated. Gaster black, anal segment and more or less of the base of the first segment, brownish yellow. Wings whitish hyaline, veins and stigma brown, the latter conspicuous.

*Male.*—Length, 5–5.5 mm. Mandibles slender, edentulous,