

2-6 as broad as long, terminal joint shorter than the three preceding joints together. Thorax thickset, depressed, as long but not as broad as the head, broader in front than behind. Promesonotal and mesoëpinotal sutures distinct; mesonotum somewhat higher than the pronotum, feebly convex, forming a regular transverse ellipse. Mesoëpinotal constriction short but distinct, its bottom formed by the mesoëpinotal suture only. Epinotum a little broader than long, with feebly rounded sides, its base very short and horizontal, passing through a rounded angle into the much longer, sloping and flattened declivity. Petiole somewhat lower than the epinotum and only about one-third as broad, as long as high and wide, with an erect, transverse node, which has flat anterior and posterior surfaces and a rounded

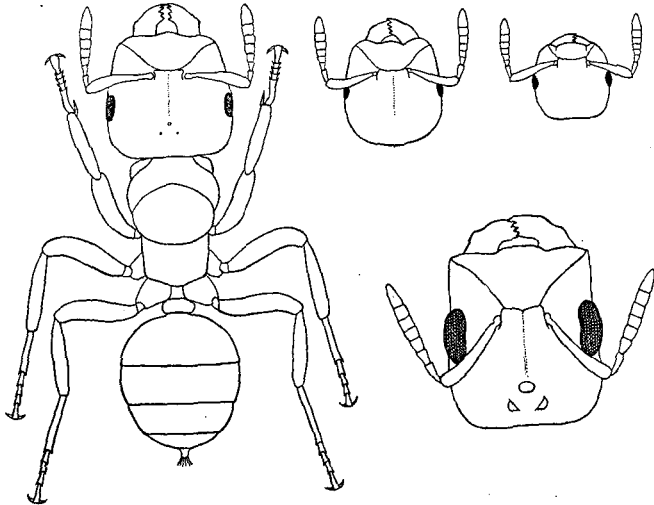


Fig. 1. Worker maxima of *Aphomomyrmex hewitti* sp. nov.; heads of worker media, worker minima and female, all drawn to the same scale.

upper surface. Gaster very broadly elliptical, smaller than the head, flattened dorsoventrally, with well-developed anal cilia. Legs long and robust; fore femora somewhat incrassated; claws and empodia large.

Body shining. Mandibles, clypeus and cheeks subopaque, punctate and finely striate, except the middle of the clypeus, which is opaque and coarsely punctate. Head sparsely, thorax and gaster more densely punctate and less glabrous.

Hairs yellowish, rather long and abundant, erect or suberect on all parts of the body and appendages, including the antennal funiculi. Pubescence yellowish, sparse and rather long, distinct on the thorax and gaster only in certain lights.