

Hairs yellowish; those on the upper surface of the body very long, slightly curved, of uniform thickness and blunt, arranged very regularly in pairs. On the head nearly all of them arise from the edges of the frontal carinae where the insertion of each hair is a minute tubercle; on the thorax the hairs are inserted along the ridges connecting the humeral angles with the epinotal spines. The petiole bears three, the postpetiole two pairs of these peculiar pairs. On the gaster there are four regular equidistant rows, with about six hairs in each

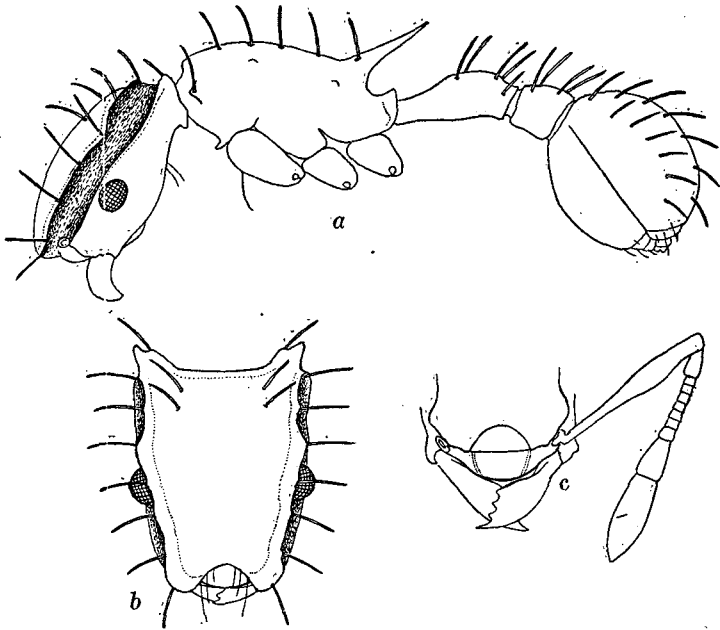


FIG. 1.—*Blepharidatta brasiliensis*, sp. nov. a, worker, lateral view; b, head of same from above; c, mandibles, clypeus and antenna of same from the front.

row. Each fore coxa bears a single long hair and there is a pair of hairs on the gula. Legs, antennae, and terminal gastric segments with numerous, short, appressed pointed hairs and the dorsal surface of the gaster also with a few scattered reclinate hairs.

Color ferruginous; antennae, legs, tip and sides of gaster somewhat paler and more yellowish.

Described from ten specimens; Cotype M. C. Z. 9040.

This extraordinary ant is evidently to be placed in the tribe Attiini,