

longitudinally striate. Gula, pleurae, meso- and epinotum, and petiole opaque, densely and coarsely punctate-rugulose; gaster with a series of strong longitudinal rugae on the dorsal surface at the anterior margin.

Hairs and spongiform appendages sordid yellowish. Head with delicate hairs, which are short, sparse, and appressed on the dorsal

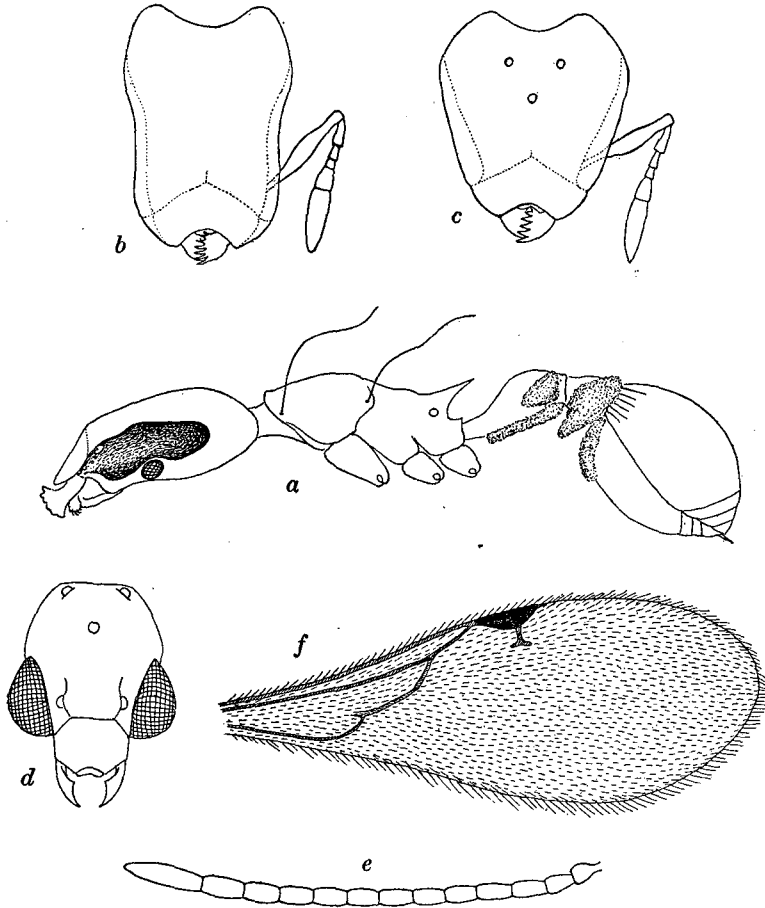


FIG. 2.—*Glamyromyrmex beebei*, sp. nov. a. worker, lateral view; b. head of same from above; c. head of female from above; d. head of male from above; e. antenna of male; f. wing of same.