

flattened, its anterior border very feebly and broadly sinuate in the middle. Frontal area rather deep, triangular, with a median carinula. Frontal carinae short, subparallel. Antennae very short, the scapes reaching the lateral borders of the head a little behind the eyes, funicular joints 2-8 distinctly longer than broad, club shorter than the remainder of the funiculus. Thorax small, through the pronotum about half as broad as the

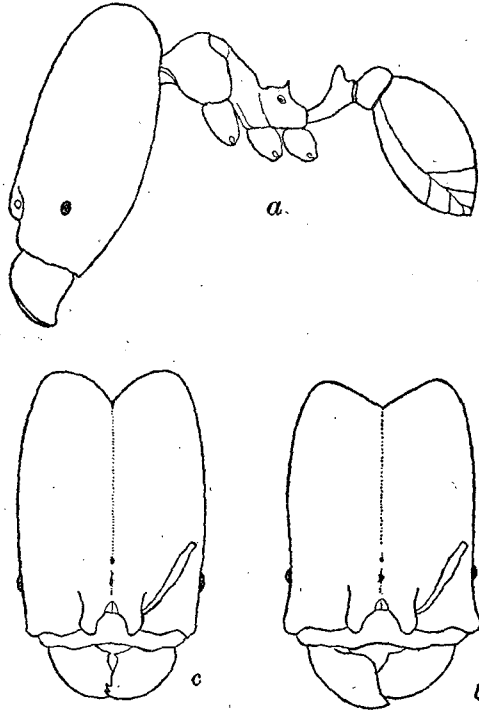


Figure 1.— *a*, *Pheidole ridicula* sp. nov., soldier in profile; *b*, head of same from above; *c*, *Pheidole absurda* Forel, head of soldier from above.

head. The pronotum is feebly convex and sloping in front, straight and transverse above, with rather prominent but rounded humeri and perpendicular sides. Promesonotal suture distinct, somewhat impressed on each side. Mesonotum sloping, straight in profile, without torus or transverse impression, behind more abruptly falling to the deep and rather broad