

Records of *mixtus* in the literature do not in general show any particular habitat preference as opposed to *umbratus*. Donisthorpe (*loc. cit.*), however, described *mixtus* colonies among Juniper in Surrey; the writer has found similar colonies associated with Juniper in Westmorland in 1954, in Glen Urquhart, Inverness-shire, in 1955, and has found this form more frequently on rough grassy hillsides than in woodland. A curious characteristic, mentioned by Donisthorpe (*loc. cit.*) but not discussed by Wilson, is that *umbratus*

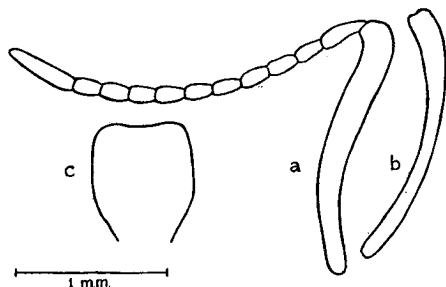


Fig. 1. *Lasius rabaudi* Bondroit, queen from Weybridge, Surrey, ex coll. Donisthorpe.

(a) Antennal scape and funiculus seen from above.

(b) Antennal scape seen from in front.

(c) Outline of petiole seen from in front.

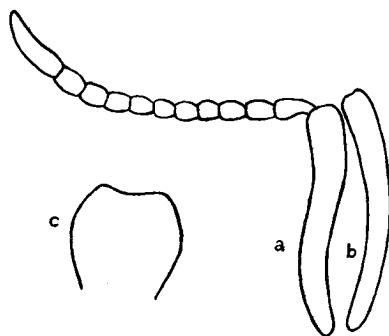


Fig. 2. *Lasius umbratus* Nylander, queen from Uffington, Lincs.

(a) Antennal scape and funiculus seen from above.

(b) Antennal scape seen from in front.

(c) Outline of petiole seen from in front.

workers from different localities do not fight together but are immediately aggressive towards other species such as *flavus* and, also according to Donisthorpe, to *mixtus*. The writer has himself tested out this behaviour, but not as yet with *mixtus*. It is clear that, while the synonymy proposed by Wilson is unchallengeable, there is at least a hint of ecological and behavioural differences that should be further studied before entirely abandoning any distinction between the two forms.