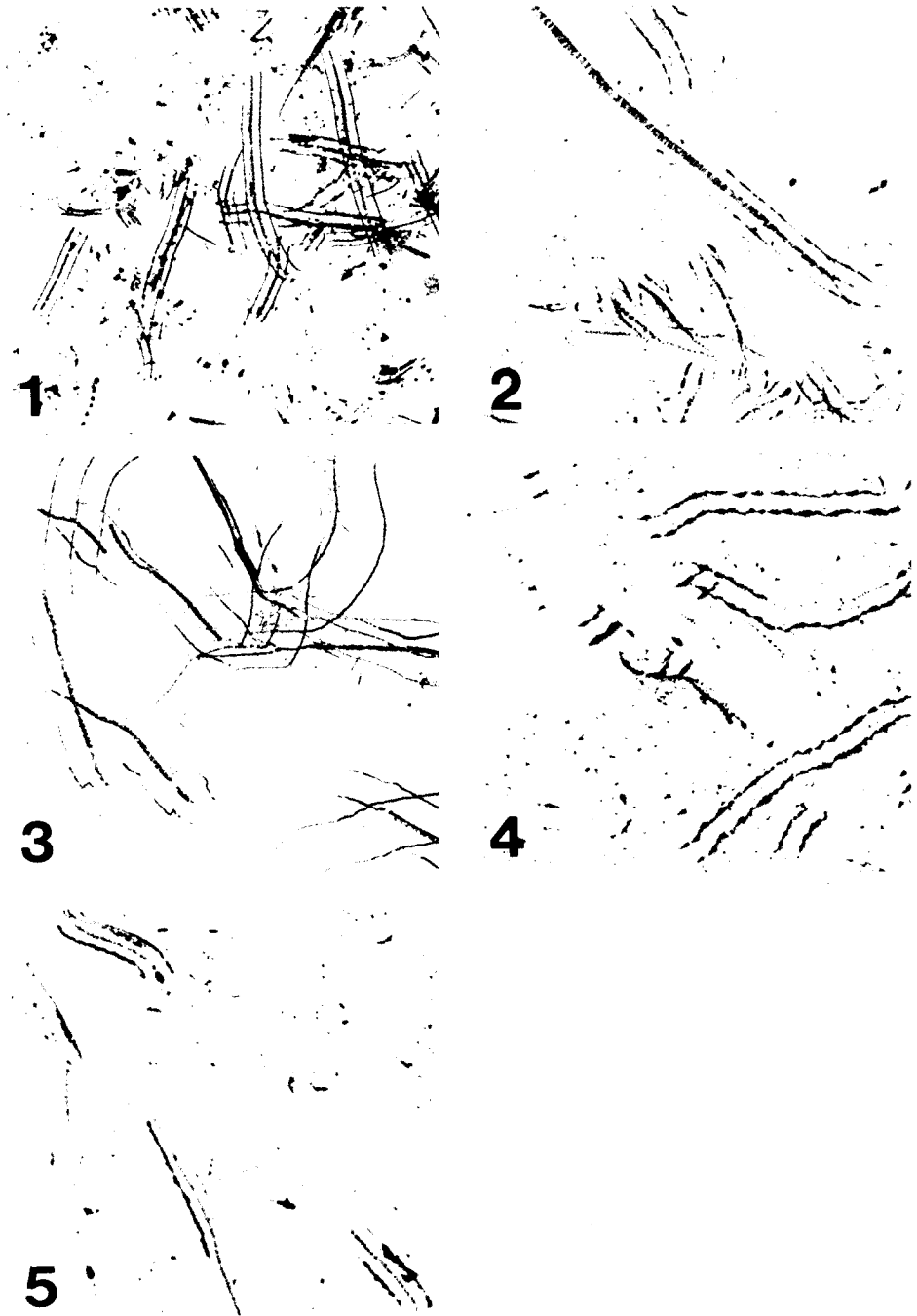


The structure of the ant arolium seems to be similar to that described for the honeybee *Apis mellifera* L. by Snodgrass (1956), in that the details seen in our Fig. 8 are similar to those in his Fig. 40.



Figs 1-5—Grip marks of various ants, elicited by allowing them to tug at a sugar bait suspended over a soot-coated slide: workers of (1) *Camponotus discors* (AAW1-1); (2) *Dolichoderus scabridus* (AAWH-1); (3) *Podomyrma gratioiosa* (AAWK-1); (4) *Rhytidoponera metallica* (AAWF-1); (5) males of *Rhytidoponera metallica* (AAWF-1). The grip marks are characterized by 3 grooves cut into the soot, the middle groove probably being cut by the extended arolium. Marks of *Rhytidoponera* workers lack the middle groove. Collection accession codes are given in parentheses.