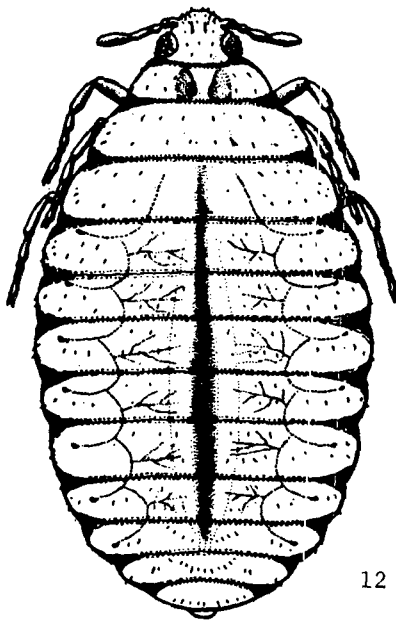
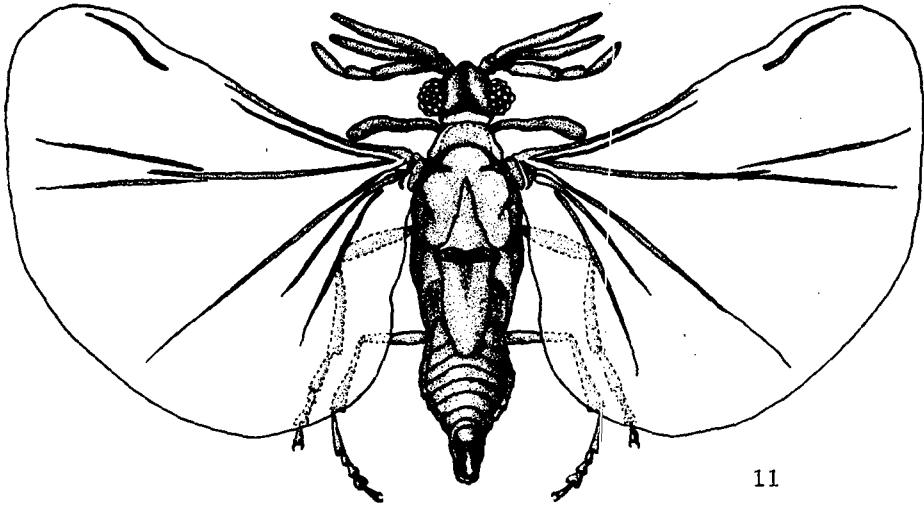


antennae, the wingless, broad form of the adult female, and the peculiar series of traits marking the so-called "triungulin" first-instar larva. The adult tarsi have the heteromerous base number 5-5-4, or 5 segments

on the forelegs, 5 on the middle legs, and 4 on the hind legs.

Characters of the Mengeidae, most primitive of stylopid families, are shown in Figures 11, 12, 15, and 18. Some of the more



FIGS. 11 and 12. Representative adult Stylopoidea of the primitive family Mengeidae. Fig. 11, *Triozocera mexicana*, adult male (after R. M. Bohart). Fig. 12, *Eoxenos laboulbenei*, adult female (after Parker and Smith).