

Fig. 5 *Pheidole megacephala* minor, lateral mesosoma ($\times 64$).

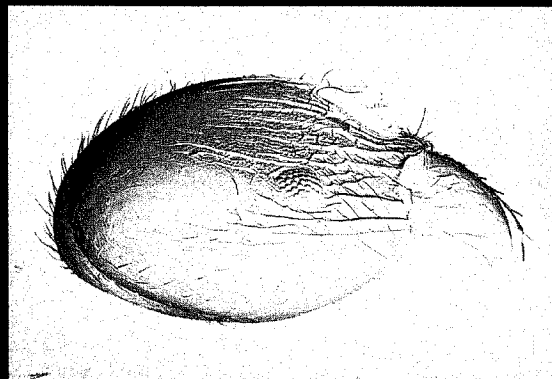


Fig. 6 *Pheidole megacephala* major, head ($\times 39$).

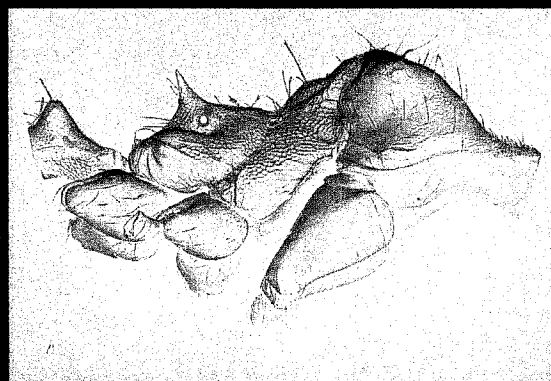


Fig. 7 *Pheidole megacephala* major, lateral mesosoma ($\times 40$).



Fig. 8 *Pheidole rugosula* minor, head ($\times 88$).

MATERIAL EXAMINED

INTERCEPTIONS: 2 majors, 3 minors, Auckland, in package of *Hibiscus* and *Frangipani* ex Fiji, 17 Aug 1951, N. Hiam, Dept of Agriculture (NZAC). 8 minors, Whangarei, in logs on wharf from Australia, 22 Feb 1960, Dept of Agriculture (NZAC). 1 major, 1 minor, in soil from Samoa, 23 Mar 1942 (NZAC). 4 majors, 2 minors, MOW workshops, ex packing straw, 6 Jul 1949, Mr Pearce (NZAC).

OTHER MATERIAL: **AK**: 1 major, 1 minor, Newmarket, 10 Feb 1942, Kelsey and Spiller, in chocolate factory (NZAC). 5 minors, Ponsonby, Jun 1963, Mr Graham, in house (NZAC). 27 minors (Acc. No. PQA575), Auckland, 19 Oct 1966, C. H. Laidlaw, on floor of cargo shed (PANZ). 3 minors (Acc. No. PQA6174), 8 Aug 1974, T. Vince, on wharf (PANZ). 1 minor (Acc. No. 2780), Auckland, 18 Jul 1974, Rentokil (PANZ). 3 minors (Acc. No. 3672), Auckland, 4 Jun 1975, N. Emery, in ship's hold

(PANZ). 1 major, 98 minors, 1 queen, City Markets, 20 Oct 1979, JBK, colony moving nest (PANZ). 22 majors, 94 minors, City Markets, 20 Oct 1979, JBK, on footpath (PANZ). 1 major, 9 minors (Acc. No. 12192), Mt Albert, 18 May 1982, Mr Holloway, in shortbread jar in kitchen (PANZ/ NZAC/ CGNZ). 2 majors, 6 minors, Mt Albert, 14 Weston Ave, 30 Mar 1984, R.E. Surnton, in meat chop (PANZ/ CGNZ). 4 minors, 1 reproductive (Acc. No. 16915), Fruit Distributors Ltd, 11 Jan 1985, P. Jennings, on pineapple (PANZ). 2 majors, Howick, 12 Apr 1995, D. Hayes, in house (PANZ). 1 major, 19 minors, Market Place, Auckland City, 18 Nov 1995, ORG, CJK, on footpath and roadside (CGNZ/ PANZ/ NZAC).

Kermadec Is: 6 majors, 9 minors, Raoul I., 13 Apr