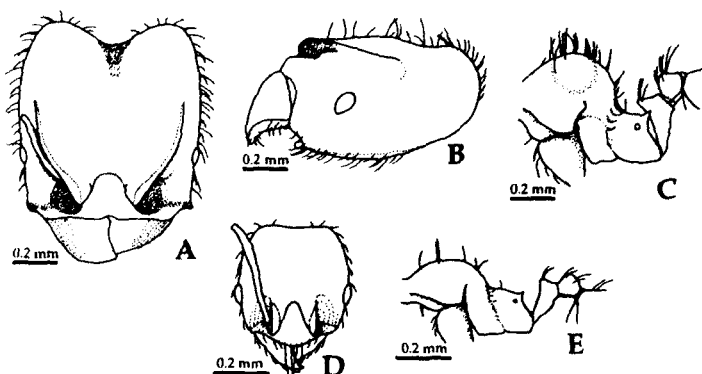


Fig. 43. *Pheidole rugifera* sp. nov.
(type material: Eg98-BOR-836):
A, major, head in full-face view;
B, same, head in profile; C, same,
alitrunk and waist in profile; D,
minor, head in full-face view; E,
same, alitrunk and waist in
profile.



helcium); petiolar node in posterior view not or slightly emarginate at apex. Postpetiole 1.5-1.8 times as broad as petiolar node.

Dorsum of head excluding occipital lobe longitudinally rugose, with interspaces punctured very weakly and shining; dorsal and dorsolateral faces of occipital lobe reticulate, with enclosures punctured very weakly and shining; outer face of mandible with rugulae running from mandibular base toward masticatory margin (Fig. 43A); dorsum of promesonotal dome weakly reticulate, with weakly punctured enclosures; lateral face of promesonotum weakly punctured or rugose; lower part of mesopleuron and declivitous face of propodeum largely smooth and shining; remainder of alitrunk largely punctured; ventral faces of midcoxa and hindcoxa distinctly reticulate; lateral face of petiole very weakly punctured; dorsum of petiole, and postpetiole and gaster smooth and shining. Outer face of mandible sparsely covered with very short appressed hairs (≤ 0.02 mm in length), which are much shorter than distance between piligerous punctures; submarginal zone of masticatory margin of mandible with a row of longer decumbent hairs. Body light brown to brown; antennae and legs lighter than alitrunk.

Minor Measurements and indices ($n=6$): TL 1.3-1.4 mm, HL 0.42-0.44 mm, HW 0.38-0.41 mm, SL 0.35-0.37 mm, AL 0.52-0.55 mm, FL 0.36-0.39 mm, CI 90-94, SI 90-94, FI 96-93. Head in full-face view weakly concave posteriorly (Fig. 43D); occipital carina absent dorsally on head. Clypeus without a median longitudinal carina, with anterior margin in full-face view slightly convex medially. Eye situated just in front of midlength of head; distance between mandibular insertion and anterior margin of eye 0.8-0.9 times as long as maximal diameter of eye. Frontal carina and antennal scrobe present only around antennal insertion. Antenna with 3-segmented club; scape slightly extending beyond posterior border of head; terminal segment 1.1-1.2 times as long as preceding two segments together. Promesonotal dome without a prominence on its posterior declivity (Fig. 43E). Mesopleuron without a distinct transverse impression. Propodeal spine ca. 1.5 times as long as diameter of propodeal spiracle. Petiole 1.8-2.0 times as long as postpetiole (excluding helcium); petiolar node in posterior view not emarginate at apex. Postpetiole in dorsal view, 1.5-1.6 times as broad as petiolar node.

Dorsum of head above subocular level including clypeus punctured; ventral face below subocular level smooth and shining; alitrunk punctured; lateral face of petiolar pedicel weakly punctured; dorsum of petiole, and postpetiole and gaster smooth and shining. Body brown with a little lighter gaster; antennae and legs lighter than alitrunk.