

0.53, EL 0.17-0.18, PW 0.16-0.19, PL 0.19-0.20, PPW 0.22-0.23, PPL 0.17-0.18. Indices: CI 84-93, SI 76-77, PI 84-95, PPI 74-82.

Mandibles with 5 or 6 teeth, apical and preapical well defined, remainder poorly developed; anterior border of clypeus varies, concave to weakly convex; clypeus with a number of well developed carinae, including medial carina; sides of head weakly convex; vertex broadly concave; eyes small, but extending past lateral border of head; scape not reaching occipital corners; max-

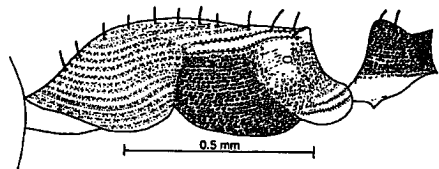


Fig. 80. Mesosoma and petiole of the holotype worker of *Leptothorax adustus*.

illary and labial palps short, not extending past buccal cavity; mesosoma nearly straight dorsally, sutures scarcely impressed; propodeum with dorsal face and posterior face nearly equal in length, propodeal angles small and poorly formed; petiole with relatively sharp apex, anterior petiolar face broadly concave, posterior face convex, bottom of peduncle with small tooth or at least bump; postpetiole not noticeably broadened.

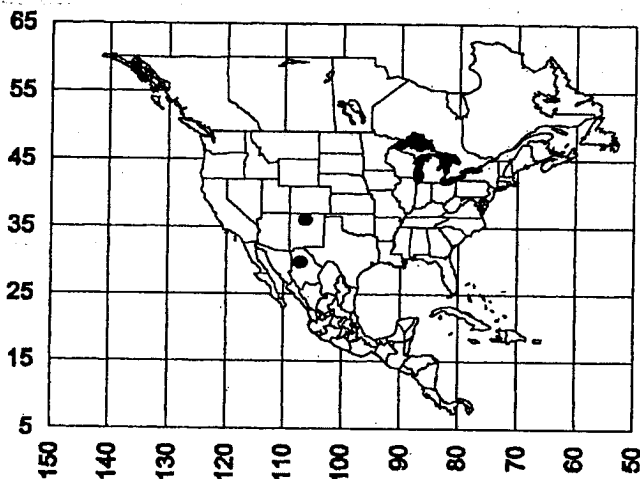
Erect hairs thickened and scattered on all surfaces except legs and scapes; decumbent pubescence scattered on all surfaces, especially obvious on legs and scapes.

Sculpture for the most part fine, consisting of fine striae on sides of head and fine punctures on mesosoma, petiole and postpetiole, central part of head, much of dorsum of mesosoma (especially pronotum) and

dorsum of gaster smooth and polished. Top of pronotum mostly punctate, but one specimen is relatively smooth and glossy and also smooth between propodeal spines.

C o l o r : concolorous dark brown.

Female measurements (mm): HL 0.76-0.79, HW 0.74-0.75, SL 0.58-0.59,



Map 1. Distribution of *Leptothorax adustus*.