

EL 0.22-0.23, WL 1.26-1.28, PW 0.23-0.26, PL 0.22-0.25, PPW 0.31-0.32, PPL 0.18-0.19. Indices: CI 94-99, SI 73-78, PI 104-105, PPI 168-172.

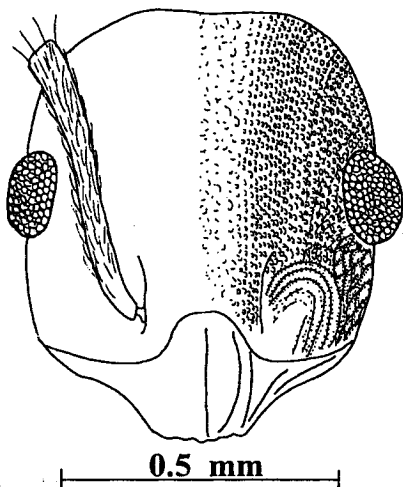


Fig. 81. Head of the holotype worker of *Leptothorax adustus*. The sculpture is shown only on the right side of the figure.

Similar to worker in most aspects, except for presence of ocelli, larger eyes and mesosoma modified for flight; striae on head cover nearly all the dorsum, background between striae smooth and shining; dorsum of mesosoma with longitudinal striae, sides of pronotum striate, sides of propodeum rugose, mesopleuron smooth and polished; propodeal angles somewhat more developed than in worker, but still consisting of only angles; petiole with sharp apex, anterior surface only very weakly concave, posterior face nearly straight, bump on venter of peduncle only weakly developed.

Erect hairs and decumbent pubescence, and color as in worker.

Male measurement (mm): HL 0.47-

0.53, HW 0.46-0.55, SL 0.12-0.14, EL 0.20-0.22, WL 0.91-1.00, PW 0.13-0.16, PL 0.19-0.20, PPW 0.18-0.19, PPL 0.16-0.17. Indices: CI 87-117, SI 23-30, PI 68-80, PPI 106-119.

Mandible with well defined apical and subapical teeth; median anterior border of clypeus convex, clypeus with transverse fine rugae; eyes large; ocelli well developed; scape short; palps short; propodeal angles nearly absent; petiole with straight anterior petiolar face, slightly convex posterior face, petiolar node rounded, not angulate as in worker and female.

Erect hairs sparse and covering nearly all surfaces, including legs; decumbent pubescence very sparse.

Sculpture consisting of dense punctures on head, rugae anterior to eyes, transverse rugae on anterior 1/3 to 1/2 of clypeus, dorsum of mesosoma mostly shining, as are sides of mesosoma, side of petiole lightly punctate.

Concolorous dark brown.

Type series: Three series from same locality, consisting of holotype worker (MCZC #5873), 14 paratype workers, 4 paratype females and 15 paratype males (CASC, CIDA, CWEM, LACM, MCZC, USNM, UNAM),