

***Leptothorax (Myrafant) bicolor* new species**

Figs. 23, 25, 90, & 91; Map 6

Species complex: *andersoni*

Diagnosis: This is a bicolored species (dark brown head and gaster, reddish brown mesosoma) with a 12-segmented antenna. The dorsum of the head is smooth and shining, the mesosoma, petiole and postpetiole are heavily sculptured. The medial clypeal carina is poorly developed, as are the lateral carinae. The surface of the clypeus is weakly convex. The propodeal

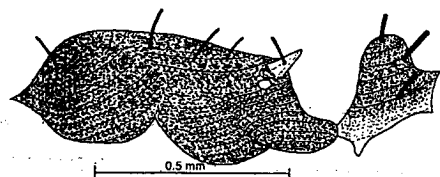


Fig. 90. Mesosoma and petiole of the holotype worker of *Leptothorax bicolor*.

spines are long and well developed (Fig. 90). The petiole is broadly rounded.

Distribution: Known only from the type locality, México, Chiapas (Map 6).

Description

Worker measurement (mm): HL 0.66, HW 0.56, SL 0.52, EL 0.18, WL 0.77, PW 0.19, PL 0.25, PPW 0.28, PPL 0.20. Indices: CI 85, SI 79, PI 76, PPI 140.

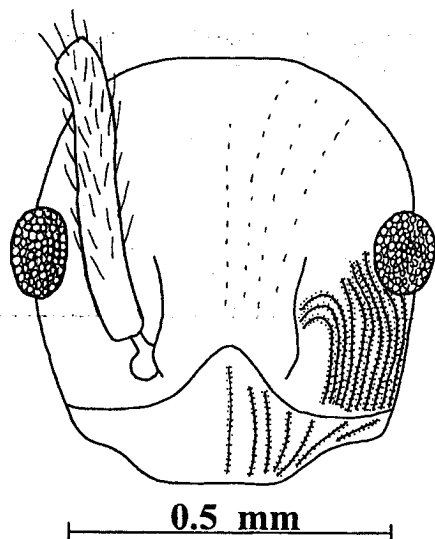


Fig. 91. Head of the holotype worker of *Leptothorax bicolor*.

Mandibles with 5 teeth; anterior border of clypeus nearly straight, clypeus with poorly defined medial carina and 4 lateral carinae on each side; vertex straight; mesosoma with none of the sutures breaking the sculpture; propodeal spines small (0.06mm in length), but well developed; petiole with well developed, blunt subpetiolar tooth, anterior petiolar face concave, posterior face convex, petiolar node blunt and rounded in profile.

Erect, blunt hairs scattered on most surfaces, up to 0.05mm in length, legs and scapes with finer hairs, which are nearly decumbent.

Dorsum of head and gaster smooth and polished, mesosoma,