

Dakota, Nebraska, Kansas, Oklahoma, Texas, Minnesota, Iowa, Missouri, Arkansas, Louisiana, Michigan, Wisconsin, Illinois, Indiana, Kentucky, Tennessee, Alabama, Ohio, Pennsylvania, New Jersey, New York, New Hampshire, Connecticut, West Virginia, Virginia, North Carolina, South Carolina, Georgia, Florida (Map 14).

Description

Male (undescribed) measurements (mm): HL 0.52-0.53, HW 0.47-0.50, SL 0.17-0.20, EL 0.25-0.26, WL 0.97-1.02, PW 0.10-0.14, PL 0.08-0.23, PPW 0.18-0.19, PPL 0.22. Indices: CI 90-94, SI 33-38, PI 61-125, PPI 82.

Mandible with apical and 1 or 2 subapical teeth well defined, others present as denticles; median anterior border of clypeus weakly convex, clypeus with well defined central, longitudinal carina and a few other, poorly defined lateral carinae; eyes very large, occupying most of side of head; ocelli well developed, diameters of all three greater than distance between them; scape short, extending about half distance to occipital corner; propodeal spines or angles absent, only indication is a poorly defined carina; petiole with

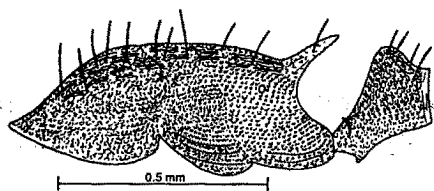


Fig. 103. Mesosoma and petiole of a worker of *Leptothorax curvispinosus* (MS).

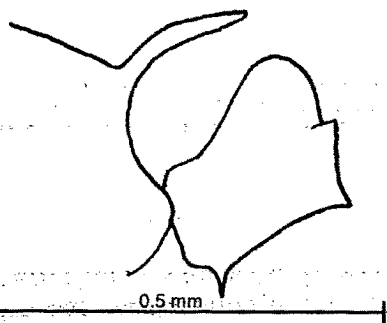


Fig. 104. Typical Propodeal spines of *L. curvispinosus*.

low node, which is not much higher than peduncle.

Hairs erect and scattered on most surfaces, suberect on antennae and legs; decumbent pubescence sparse.

Sculpture consisting of rough, longitudinal striae on most of head, area posterior to eyes with concentric whorls, clypeus with central carina and poorly defined lateral carinae, sides of mesosoma mostly smooth and shining, but with a few rugae, propodeum mostly smooth, but finally striate, petiole striate.

Color: pale yellow with black eyes.

Type series: One cotype worker in MCSN [seen], specimens could not be located in Roger's collection (Museum für Naturkunde Zentralinstitut der Humboldt-Universität zu Berlin).

Discussion: This species is easily recognized as the bases of the propodeal spines are closely set and the spines are usually very long