

cate and square shaped in *L. rugithorax*). It can be separated from *L. neomexicanus*, but is lighter in color and has a much more developed subpeduncular process. Wheeler (1909) states that *L. furunculus* has distinct mesopropodeal impression, which is correct, although the impression is poorly developed and not much more notable than in most of the other species in the subgenus.

Biology: Nests under stones in pinyon-cedar woodlands (Wheeler, 1909; Gregg, 1963). Wheeler (1909) mentions the type series has a peculiar oily appearance not seen in any of the other species in the genus.

Leptothorax (Myrafant) gallae M. Smith

Figs. 48, 49, 50, 112, & 113; Map 18

Leptothorax (Leptothorax) gallae Smith, 1949:112-115, worker, California, Pasadena, Devil's Gate Dam; *Leptothorax (Myrafant) gallae*: Smith, 1979:1393

Species complex: *tricarinatus*

Diagnosis: The entire dorsum of the head of this species is usually sculptured, with fine costulae mixed with the background punctures and the antenna has 12 segments. The propodeal spines are well developed, longer than the distance between the bases (shorter in smaller workers). The sides of the pronotum are rugose, as well as the top of the mesosoma (can be seen most easily by looking obliquely from the side), but the rugae on the sides of the pronotum are poorly defined

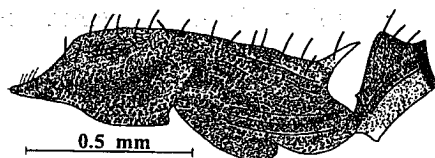


Fig. 112. Mesosoma of cotype worker of *Leptothorax gallae*.

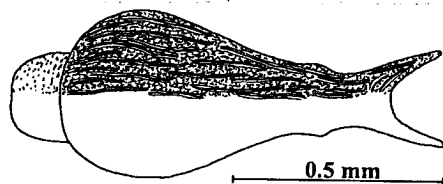


Fig. 113. Mesosoma of a cotype worker of *Leptothorax gallae*. The sculpture is shown only on the right side.

and mixed with the background punctuation, and not shiny in the intrarugal surfaces. The rugae are somewhat mixed with the background punctures. The node of the petiole is somewhat sharp in profile, the top of the node is coarsely reticulo-rugose, and looks "pinched" or constricted laterally as seen from top (Fig. 50), the subpeduncular tooth is well developed. The erect hairs are all blunt and short (about 0.05mm).

Distribution: USA, California, Los Angeles Co., Pasadena, Devil's Gate Dam; Riverside Co.; Napa Co.; Orange Co. (Silverado Canyon), Butte Co.; Santa Barbara Co. (Mt.