

Leptothorax (Myrafant) manni Wheeler

Figs. 27, 126, & 127; Map 24

Leptothorax manni Wheeler, 1914:53-55, worker, female, male, México, Hidalgo, Guerrero Mill (eastern slope of high mountain range east of Pachuca); *Leptothorax (Myrafant) manni*: Kempf, 1972:132

Species complex: *andrei*

Diagnosis: The workers of this species are concolorous medium brown, with most surfaces smooth and shining. The antenna has 12 segments. The dorsum of the head is glossy, the area posterior to the insertions of the antennae have a number of concentric whorls of striae, which extends to the side of the head and posterior to the eye. The top of the mesosoma, especially the pronotum, is mostly smooth and glossy, the sculpture on the dorsum of the pronotum has fine rugae, the side of the pronotum is mostly smooth and shining, but with fine striae, and the sides of the mesosoma have striae or rugae, which become fine rugae on the propodeum. The surfaces that are sculptured are still glossy and shiny. The propodeal spines are

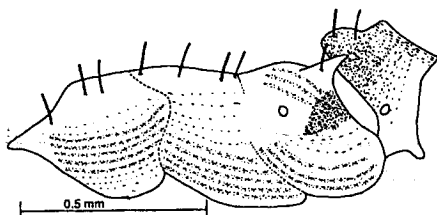


Fig. 126. Mesosoma of a cotype worker of *Leptothorax manni*.

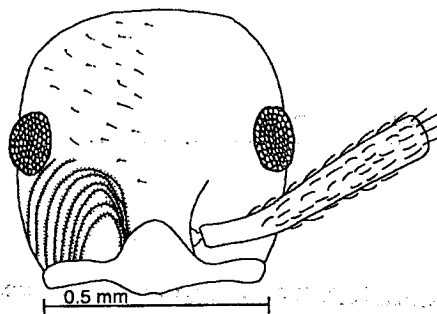


Fig. 127. Head of a cotype worker of *Leptothorax manni*.

small, but developed. The area between the spines and the descending face of the propodeum has transverse striae. The side of the petiole is roughly sculptured, with punctures mixed and merging into striae, the top of the node is more finely punctate, with coarse irregular rugae, the side of the postpetiole is finely sculptured, with fine punctures, the top has similar sculpture. The petiolar node is rounded as seen in profile.

Distribution: MEXICO: Hidalgo (type locality: Guerrero Mill), Morelos (Cuernavaca, CWEM). Another specimen from Nuevo León, appears to be *L. manni* (CWEM). The data are: 30.5 K E. Dr. Arroyo, 10-vi-1988, 1670 m, W. Mackay #10979-14, collected in a surface trap baited with Vienna Sausage (Map 24).

Type series: USNM [seen].

Discussion: This species is a member of a group of species (part of the *andrei* species complex) in which the dorsum of the head is