

of the node (see *L. melinus* discussion).

Specimens from the Chiricahua Mountains of Arizona differ somewhat from the type material. They are darker brown; the flange and tooth on the anterior peduncle of the petiole are somewhat more developed, there are more costulae on the dorsum of the head; the dorsum of the pronotum is somewhat smooth and shiny versus the completely punctated pronotum in the type material. Even though the populations are widely separated geographically and isolated by desert regions, I feel there would be little justification for recognition of a separate species.

Biology: This species nests under rocks in pine-fir forests (Wheeler, 1917; Cole, 1958a; Mackay, pers. obs.). They are found in leaf litter of Douglas fir, *Rhododendron*, life oak and laurel (Anderson, pers. obs.). This species is also found in relatively dry sites. Cole (1958a) reports nest size as 58-97 workers. Thirty-seven workers were collected in one nest (Mackay, pers. obs.).

***Leptothorax (Myrafant) maryanae* new species**

Figs. 34, 129, 130, & 131; Map 26

Species complex: *nitens*

Diagnosis: This is a brown species with a 12-segmented antenna.

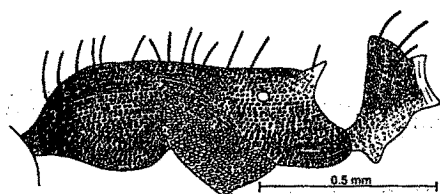


Fig. 129. Mesosoma and petiole of the holotype worker of *Leptothorax maryanae*.

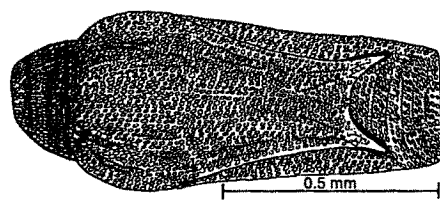


Fig. 130. Mesosoma of the holotype worker of *Leptothorax maryanae*, as seen from above.

The eye of the female has abundant, obvious, short, bristly hairs. The worker and male have similar hairs, but they are finer and difficult to see. The head has fine striolae, with a glossy, shiny background. The clypeus is shiny and polished, with a fine median carina and several very fine lateral carinae. The mesosoma is primarily punctate, but with many rugae, especially on the top of the pronotum and top of the propodeum. The petiole has a sharp apex, when viewed in profile. The petiole and postpetiole are punctate, with rugae on the side of the petiole. The dorsum of the first gastral tergite is smooth and polished.

Distribution: San Bernardino Mountains of southern California.