

Formicoxenns.

Biology: The type series was collected nesting in the soil in an open area in a pine forest nesting very closely to a *Pogonomyrmex montanus* Mackay nest, but were apparently not actually in the harvester ant nest. The alate female (# 2614) was collected in a *P. montanus* nest, at the 10cm depth. The small dealate female (# 2609) and a second, normal sized female (# 2468) were prey items of *P. montanus*, but may have been dead when encountered, as they are dirty and in poor shape. It is possible that this species is an inquiline of *P. montanus*, and if so, is not very common as it was only collected associated with 2 nests of a total of 80 nests that were completely excavated (Mackay, 1981)

***Leptothorax (Myrafant) melinus* new species**

Figs. 29, 33, & 132; Map 27

Species complex: *nitens*

Diagnosis: This is a small species of honey colored *Leptothorax* with 12 segmented antennae, in which the head is nearly completely smooth and shining and the mesosoma is completely and densely punctate.

Distribution: USA: west central New Mexico (Map 27).

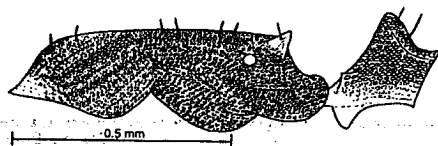


Fig. 132. Mesosoma of holotype of worker of *Leptothorax melinus*.

Description

Worker measurement (mm): HL 0.62-0.66, HW 0.52-0.56, SL 0.46-0.50, EL 0.13-0.14, WL 0.66-0.67, PW 0.13-0.14, PL 0.16-0.17, PPW 0.17-0.19, PPL 0.13-0.14. Indices: CI 84-85, SI 74-76, PI 81-82, PPI 131-136.

Mandibles with 5 teeth, only apical 3 well defined; anterior border of clypeus convex, clypeus with medial carina and 3 or 4 lateral carinae; vertex concave; mesosoma with none of the sutures breaking surface sculpture; propodeum with small, angle-like spines; petiole with large, blunt, subpetiolar process, anterior petiolar face nearly straight, posterior face convex, petiolar node with relatively sharp apex.

Hairs erect, but sparse, and found on most surfaces, except antennae and legs (coxae with erect hairs); decumbent pubescence on scapes and legs.

Sculpture consisting of fine striae on both sides of central strip of head without sculpture, mesosoma completely and densely punctate, petiole and postpetiole punctate, gaster smooth and shining.

Concolorous honey colored.

Female and male: Unknown.