

Fig. 133. Mesosoma and petiole of the holotype worker of *Leptothorax mexicanus*.

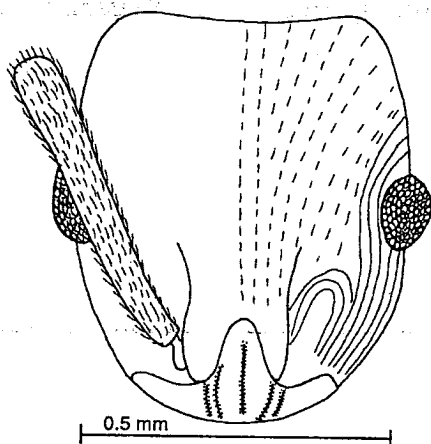


Fig. 134. Head of a paratype worker of *Leptothorax mexicanus*. The sculpture is shown only on the right side of the figure.

the mesonotum are mostly smooth and polished. The dorsal face of the propodeum is punctate with transverse striae. The petiolar node is blunt and rounded. The female is considerably different from the worker as it is more heavily sculptured, has well-developed propodeal spines, and the node of the petiole is more acute.

Distribution: MEXICO, Coahuila and San Luis Potosí (Map 28).

Description

Worker measurement (mm): HL 0.60-0.65, HW 0.52-0.53, SL 0.49-0.52, EL 0.13-0.16, WL 0.70-0.72, PW 0.16-0.18, PL 0.20-0.22, PPW 0.19-0.22, PPL 0.16-0.17. Indices: CI 82-87, SI 80-82, PI 80-82, PPI 119-129.

Mandibles with 5-6 teeth, only 3 or 4 well defined; anterior border of clypeus moderately convex, clypeus mostly smooth and shining, with poorly developed carinae and a median carina; head with weakly convex

sides, vertex concave; eyes small, but exceeding sides of head; scape not reaching occipital corner; pronotum with promesonotal suture visible when seen from above, but none of sutures impressed with mesosoma in profile; propodeum with dorsal and posterior face equal in length, propodeal spines consisting of poorly developed angles; petiole with weakly concave anterior face, posterior face convex, petiolar node rounded in profile.

All surfaces with scattered, coarse, blunt hairs, hairs on legs and antennae (including scapes) much finer and semierect; decumbent pubescence nearly absent, except for a few coarse hairs on gaster.

Sculpture mostly smooth and shining, head with barely perceptible fine costulae on sides and dorsum of head, malar area with scattered punctures and fine rugae, mesopleuron and sides and faces of propodeum with scattered punctures, sides and part of tops of petiole and postpetiole with fine punctures, gaster shining.

Color: dark brown.