

Description

Worker measurement (mm): HL 0.54-0.62, HW 0.47-0.55, SL 0.37-0.41, EL 0.15-0.18, WL 0.62-0.71, PW 0.14-0.18, PL 0.16-0.22, PPW 0.18-0.22, PPL 0.14-0.17. Indices: CI 87-93, SI 66-69, PI 70-100, PPI 113-157.

Mandibles with 5 or 6 teeth; an-

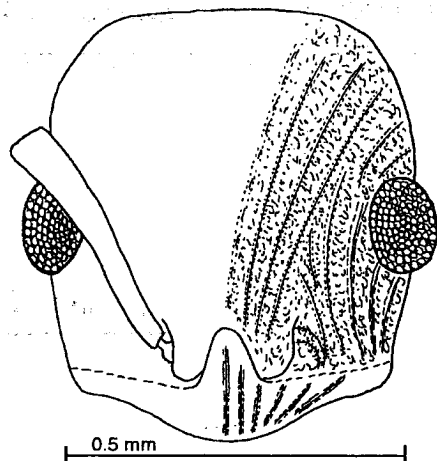


Fig. 190. Head of a paratype worker of *Leptothorax whitfordi*. The sculpture is shown only on the right side of the figure.

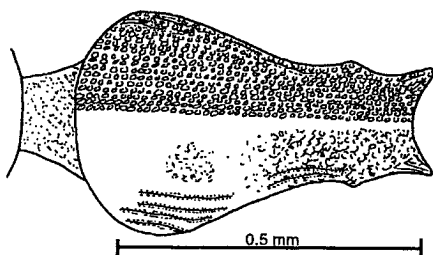


Fig. 189. Mesosoma of a paratype worker of *Leptothorax whitfordi*. The sculpture on the right is that of the paratype, the sculpture on the left is that of a specimen from San Luis Potosi, in which the pronotum is mostly smooth and shining.

terior border of clypeus concave to convex, clypeus with well defined medial carina, 2 or 3 lateral carinae; sides of head and vertex straight or weakly concave; scape short, extending about 3/4 distance to posterior corner of head, antenna with 11 segments; mesosoma with none of sutures breaking surface sculpture; propodeal spines consisting of tiny angular processes; peduncle of petiole with well developed ventral tooth, with prominent

flange above point of attachment, anterior petiolar face straight, posterior face convex, petiolar node broadly rounded and blunt.

Hairs scattered and erect, with blunt or weakly spatulate tips, present on most surfaces, except legs and antennae, especially coarse and blunt tipped on petiole and postpetiole; decumbent pubescence sparse, present on legs and antennae.

Sculpture characteristic of this species: head in large part smooth and shining, lateral parts with fine costulae, fine rugae between eye and frontal carinae and eye and base of mandibles, entire mesosoma, petiole and postpetiole completely covered with coarse, dense punctures, but shining, pronotum may be lightly punctate, but gaster smooth and polished.

Color: medium to dark brown.

Female (dealate) measurements (mm): HL 0.65, HW 0.64, SL 0.44, EL 0.20, WL 1.15, PPW 0.31, PPL 0.19. Indices: CI 98, SI 68, PPI 163.