

Figs. 1-3

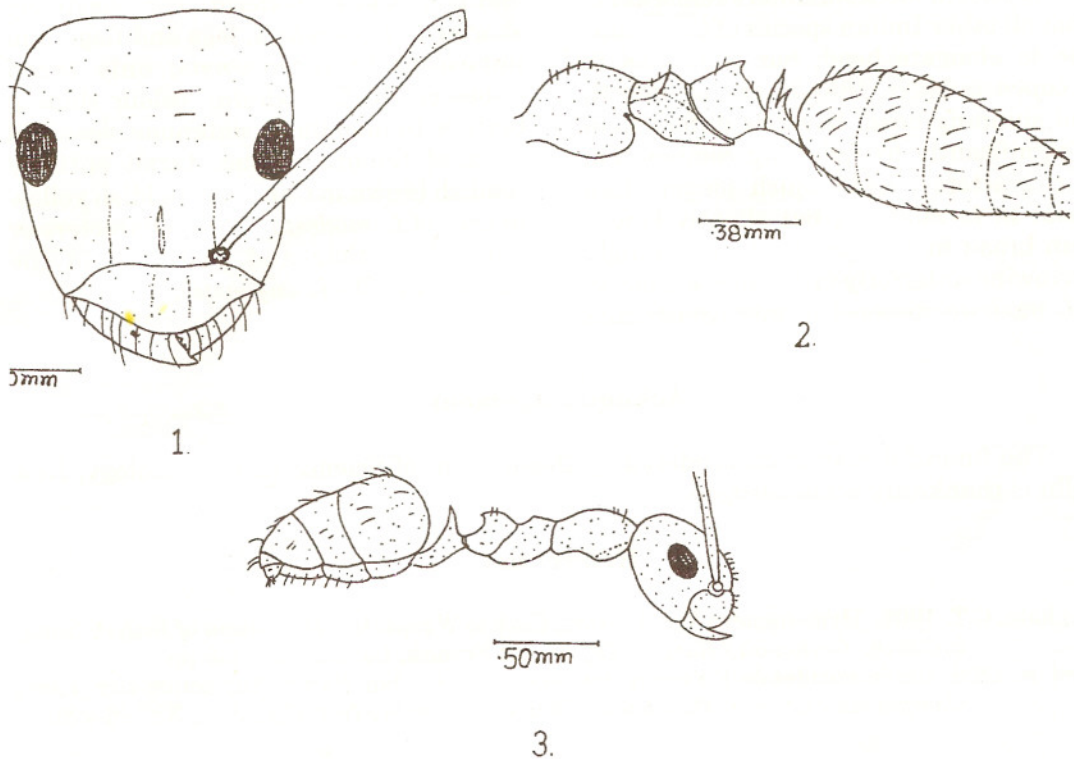


Fig. 1 : Head. Fig. 2 : Alitrunk, petiole and gaster. Fig. 3 : *Lepisiota capensis*.

spines of broad bases; upper margin of petiole deeply emarginate; alitrunk and petiole smooth, shining with few indistinct punctures on mesonotum; covered with sparse erect hair; legs with minute pubescence on tarsii.

*Gaster* (Fig. 2) : Oval, narrowing towards apex; smooth and shining; covered with fine erect hair, much dense as compared to rest of body.

Head, alitrunk and petiole reddish yellow with scape and legs paler; gaster with broad brown bands interspersed by

lighter markings.

*Specimens examined* : 55 workers; India, Uttaranchal, Mussoorie, Dhanaulti; 2,200 m.

*Habitat* : Workers collected from *Pinus* tree.

*Population Variation* : No significant variation among workers.

*Female and Male* : Not recorded yet.

*Distribution* : India, Uttaranchal.