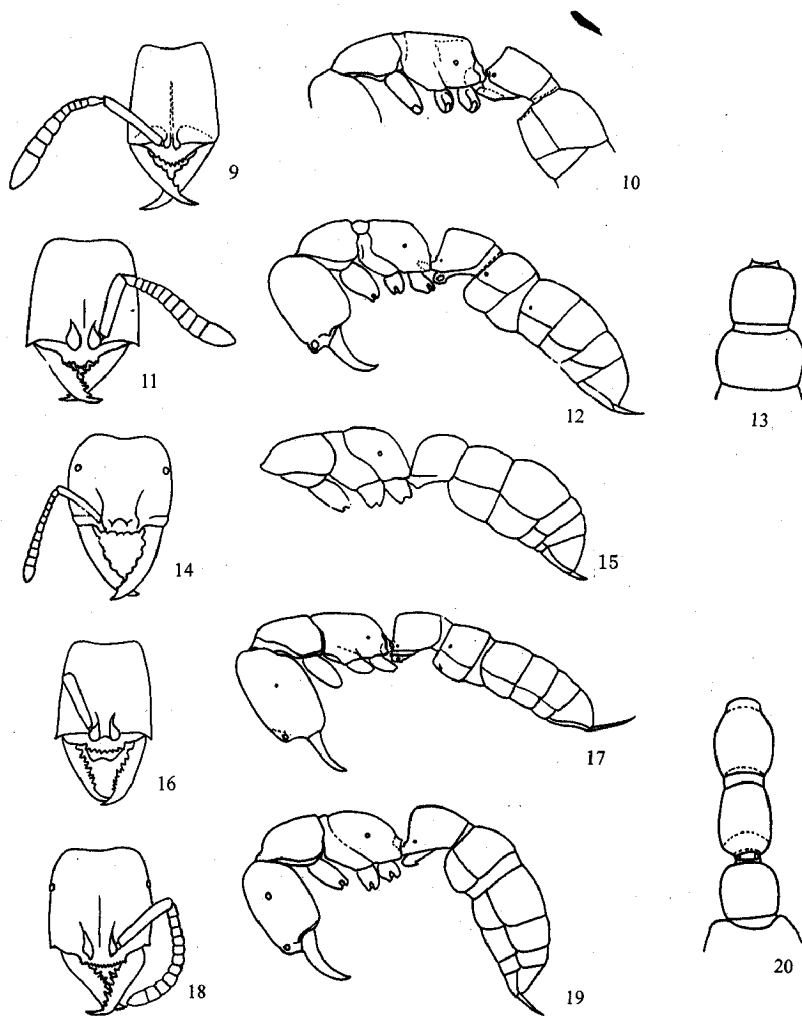


slender, relatively straight, with 2 rows of teeth, the dorsal row with 6 teeth, the ventral row with 5 ones. Anterior margin of clypeus weakly convex, with 12 minute denticles. Median furrow present on the anterior 2/3 dorsum of head. Antennae 12-segmented, apex of scape reached to 3/4 of the distance from antennal socket to occipital corner, segments 4-10 about as broad as long. Eyes relatively large, situated behind the midline of head, each with 19 facets. In profile view, pronotum weakly convex, both promesonotal suture and metanotal groove distinctly notched. Dorsum of propodeum evenly convex, longer than declivity, the latter truncate, posterodorsal corner of propodeum rounded. In profile view, petiolar node roughly trapezoid, narrowed backward, anterior face truncate and straight, dorsum evenly convex, anterodorsal corner bluntly prominent and close to a right angle, ventral face oblique. Subpetiolar process nearly rectangular, without fenestra, rounded anteriorly, posteroventral corner toothed. In dorsal view, mesothorax strongly constricted, petiolar node nearly square, as broad as long, anterior and later-



Figs. 9-20 *Amblyopone* workers

9-10. *A. sakaii* Terayama 11-13. *A. triloba* sp. nov. 14-15. *A. rubiginosa* Wu et Wang 16-17. *A. silvestrii* (Wheeler) 18-20. *A. crenata* sp. nov. 9, 11, 14, 16, 18. head in full face view 10, 12, 15, 17, 19. body in profile view 13. petiole and first segment of gaster in dorsal view 20. thorax and petiole in dorsal view 9-10. after Terayama (1989), pilosity omitted 14-15. after Wu et al. (1995) 16-17. after Terayama (1990), pilosity omitted