

Fig. 4. Variability of petiolar scale in caudal view in gynes of *Lasius austriacus* sp.n. Scale bar: 600  $\mu$ m.

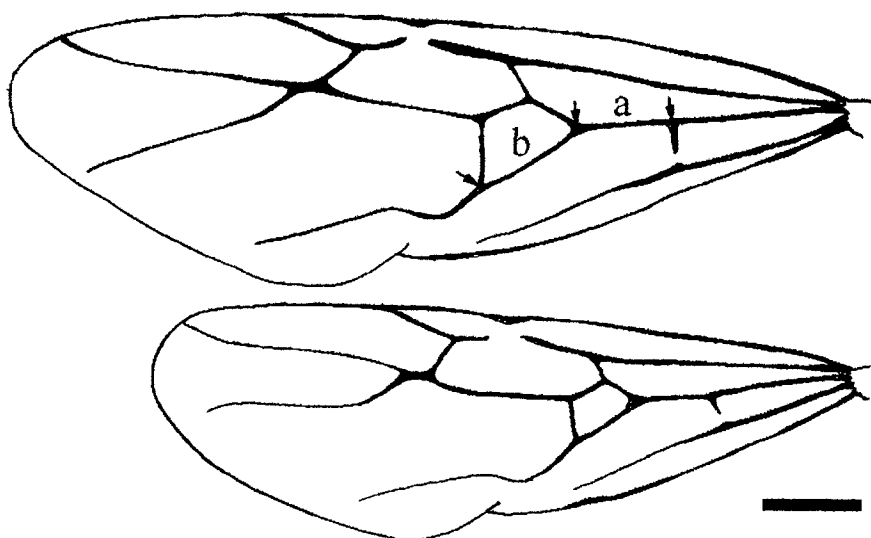


Fig. 5. Forewings of the gyne of *Lasius austriacus* sp.n. (above) and *L. neglectus* (below). Distances "a" and "b" as defined in Material and Methods, Morphometric characters. Scale bar: 1000  $\mu$ m.

#### PHYLOGENETIC POSITION, DIFFERENTIAL DIAGNOSIS AND DISCUSSION

*Lasius austriacus* sp.n. is a species of the subgenus *Lasius* s.str. It is classified within the *L. brunneus* group based on the character combination of a reduced number of mandibular dents (mean value < 8) and small body size. The only other Palaearctic species with reduced mandibular dentition, the Himalayan *Lasius magnus* Seifert 1992 (not belonging to the *L. brunneus* group), has an extremely large body size and a distinctly different pubescence pattern. Within the *L. brunneus* group, the workers of *L. austriacus* sp.n., *L. neglectus* and *L. turcicus*