

Fig. 2: *Protanilla schoedli* sp.n., holotype gyne: (A) head and left antenna in dorsal view; (B) mandibles in dorsal view showing the modified hairs substituting the teeth and probable trigger hairs arising from the lower internal face of the mandible.

the Oriental region. *Protanilla*, at present, appears to be confined to the Oriental and South Palaearctic regions in Asia.

Acknowledgements

We must express our gratitude to the Editors of Myrmecological News and to two anonymous Referees for greatly improving the presentation and the transparency of this paper by means of a long set of meticulous suggestions and remarks.

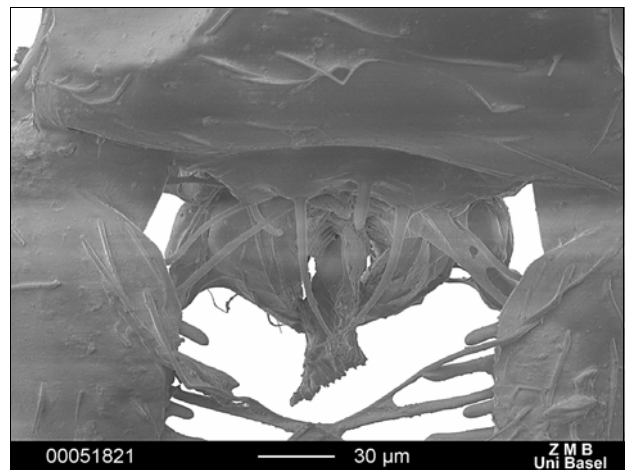


Fig. 3: *Protanilla schoedli* sp.n., holotype gyne, dorsal view of the labrum with "teeth"-like modified hairs and probable trigger hairs.

Zusammenfassung

Protanilla schoedli sp.n. wird anhand einer Gyne aus Sri Lanka beschrieben. Diese erste beschriebene *Protanilla*-Gyne hat Augen und Flügel – zwei plesiomorphe Merkmale, die bei *Leptanilla*-Gynen nicht auftreten. Durch die Beschreibung der neuen Art wird die geographische Verbreitung dieser südpaläarktischen und orientalischen Gattung beträchtlich erweitert.

References

- BARONI URBANI, C. 1977: Materiali per una revisione della sottofamiglia Leptanillinae EMERY (Hymenoptera: Formicidae). – Entomologica Basiliensia 2: 427-488.
- BOLTON, B. 1990: The higher classification of the ant subfamily Leptanillinae (Hymenoptera: Formicidae). – Systematic Entomology 15: 267-282.
- BOLTON, B. 1994: Identification guide of the ant genera of the world. – Harvard University Press, Cambridge, MA, 222 pp.
- XU, Z. 2002: A systematic study on the ant Subfamily Leptanillinae of China (Hymenoptera: Formicidae). – Acta Entomologica Sinica 45: 115-120.
- XU, Z. & ZHANG, J. 2002: Two new species of the ant Subfamily Leptanillinae from Yunnan, China (Hymenoptera: Formicidae). – Acta Entomologica Sinica 27: 139-144.