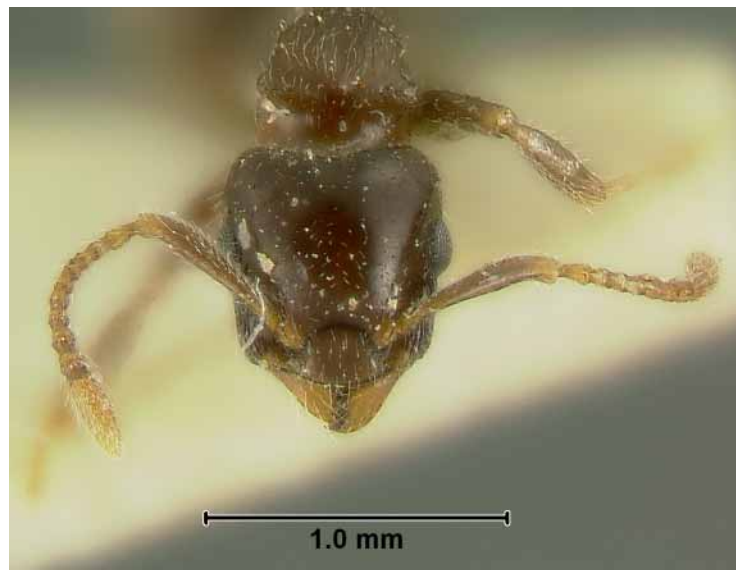


***Peronomyrmex greavesi* sp. n. (Figs 5–7)**

Types. Holotype worker, Clohesy River, near Mareeba, Queensland, 15 June 1937, T. Greaves (Australian National Insect Collection).

Diagnosis. This species can be separated from others in this genus by the absence of distinct sculpturing on the dorsum of the head, the broadly concave posterior face of the postpetiole and in having the area between humeral angles flat. This is also the northernmost species known in this genus.



FIGURES 5, 6. Holotype worker of *Peronomyrmex greavesi*. Fig.5, head; Fig. 6, lateral view.

Description. Total length 3.4 mm; maximum head length 0.81 mm; maximum head width (behind eyes) 0.73 mm; maximum diameter of eye 0.20 mm; scape length 0.60 mm; cephalic index (HW/HLx100) 90; scape index (SL/HWx100) 82; width across pronotal humeri 0.55 mm; Weber's length of mesosoma 1.07 mm; dorsal petiole width 0.19 mm;