

segment of funiculus longer than four preceding segments.

Mesosoma robust, promesonotum only moderately convex dorsally; anepisternum set lower than the adjacent surface; metanotal groove deeply impressed; propodeal spines very short and subtriangular; pro-

podeal spiracle wide open, relatively projected laterad and directed posteriorly.

Petiole pedunculate, slightly arched, with a prominent and thick node which is nearly longer than the peduncle, node with steep anterior and gently sloping postero-dorsal faces, peduncle ventrally

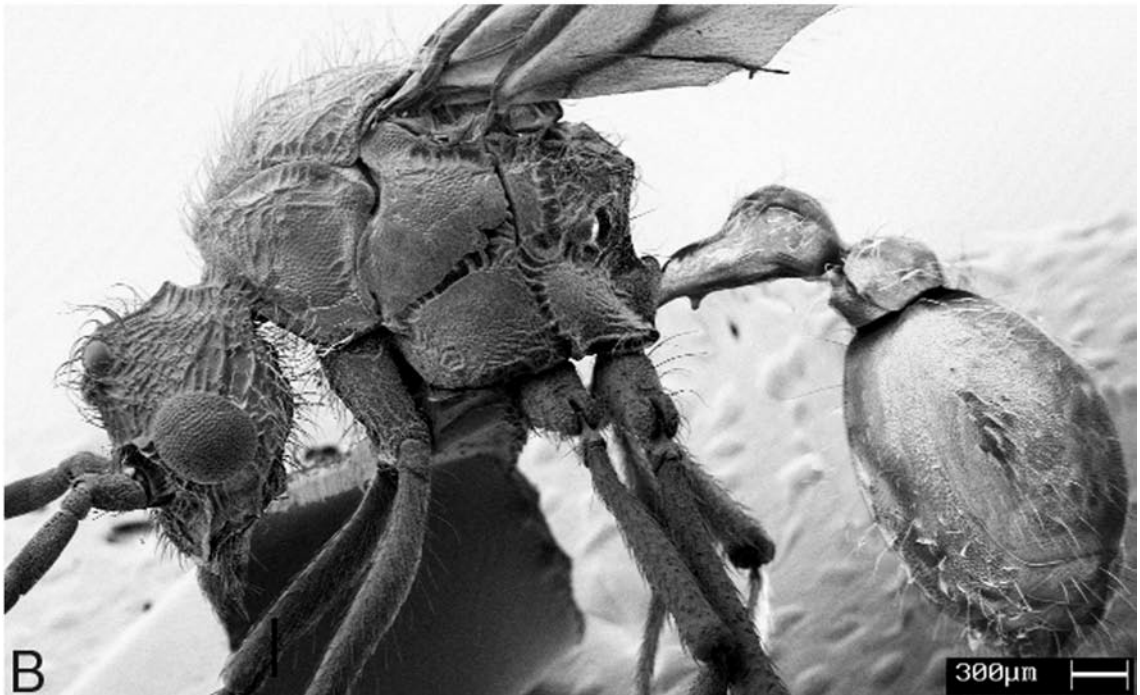
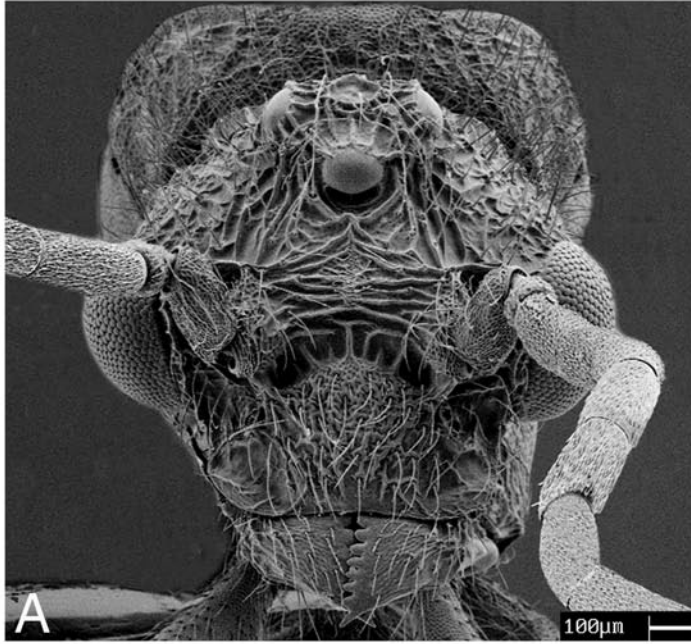


FIGURE 3. *Basiceros scambognathus*, male; a) head in full-face view; b) body in profile.