

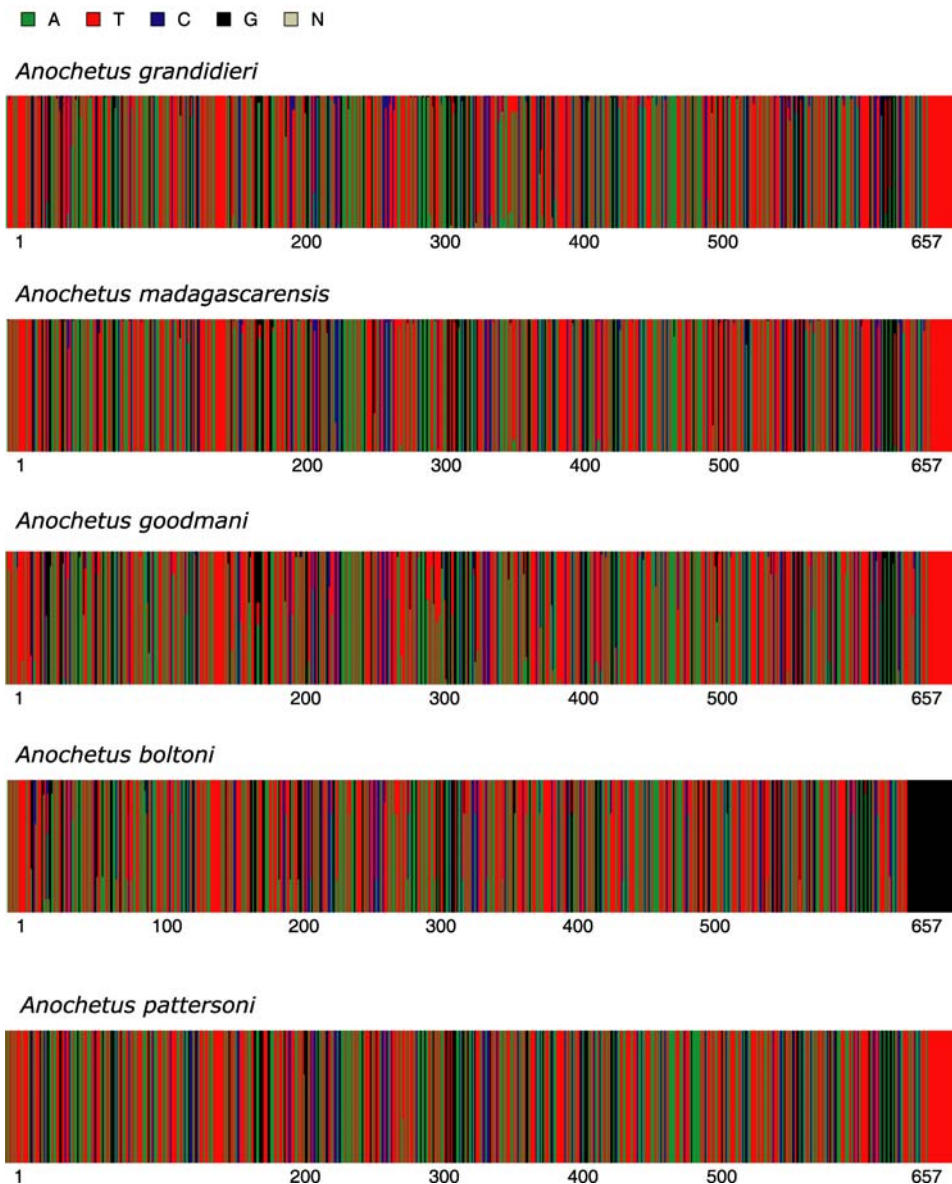
CO1 DNA Barcode Heterogeneity for Malagasy *Anochetus*

Figure 16. *Anochetus* spp. CO1 DNA barcode heterogeneity. *A. grandidieri* (n = 113), *A. madagascarensis* (n = 115), *A. goodmani* (n = 47), *A. boltoni* (n = 12) and *A. pattersoni* (n = 3).
doi:10.1371/journal.pone.0001787.g016

Because of its preference of secondary habitats, it is possible that *troglydytes* in Madagascar is a recent colonist from Africa, possibly introduced by humans. This is in contrast to *coquereli* which is most closely related to Melanesian species in the *tyrannicus* group.

Our collections in Madagascar were focused primarily on less disturbed habitats, thus the distribution map (Fig. 10b) probably does not reflect the full extent of its range. *O. troglodytes* was most often recorded nesting in rotten logs (30 collection records) followed by sifted litter (15). Males were collected at light, malaise traps, and yellow pan traps.

A lab colony was kept for a number of months and thrived on a diet of crickets, producing numerous larvae, brood, and males. The trap jaw behavior is very similar to that of *O. bauri* [39, Fisher unpublished]. When disturbed, the specimen use trap jaw propulsion to “jump” away.

CO1. Shallow intraspecific and deep interspecific divergences between *O. troglodytes* in Madagascar and Africa and the other species – what one might expect if it has been recently introduced. Average within species sequence divergence of 0.4% (Figs 15, 17).

Diagnostic barcoding loci. *O. troglodytes*: G-1659, G-465, G-519, T-535, A-537.

Specimens examined for *Odontomachus troglodytes*: Specimens from 105 separate collection events from the following 40 localities were examined. **CAMEROON:** Sud: Res. de Faune de Campo, 2.16 km 106° ESE Ébodjé; Sud-Ouest: Bimbia Forest, 7.4 km 119° ESE Limbe. **CENTRAL AFRICAN REPUBLIC:** Prefecture Sangha-Mbaéré: Parc National Dzanga-Ndoki, 39.6 km 174° S Lidjombo; Parc National Dzanga-Ndoki, 38.6 km 173° S Lidjombo; Parc National Dzanga-Ndoki, 37.9 km 169° S Lidjombo; Réserve Spéciale de Forêt Dense de