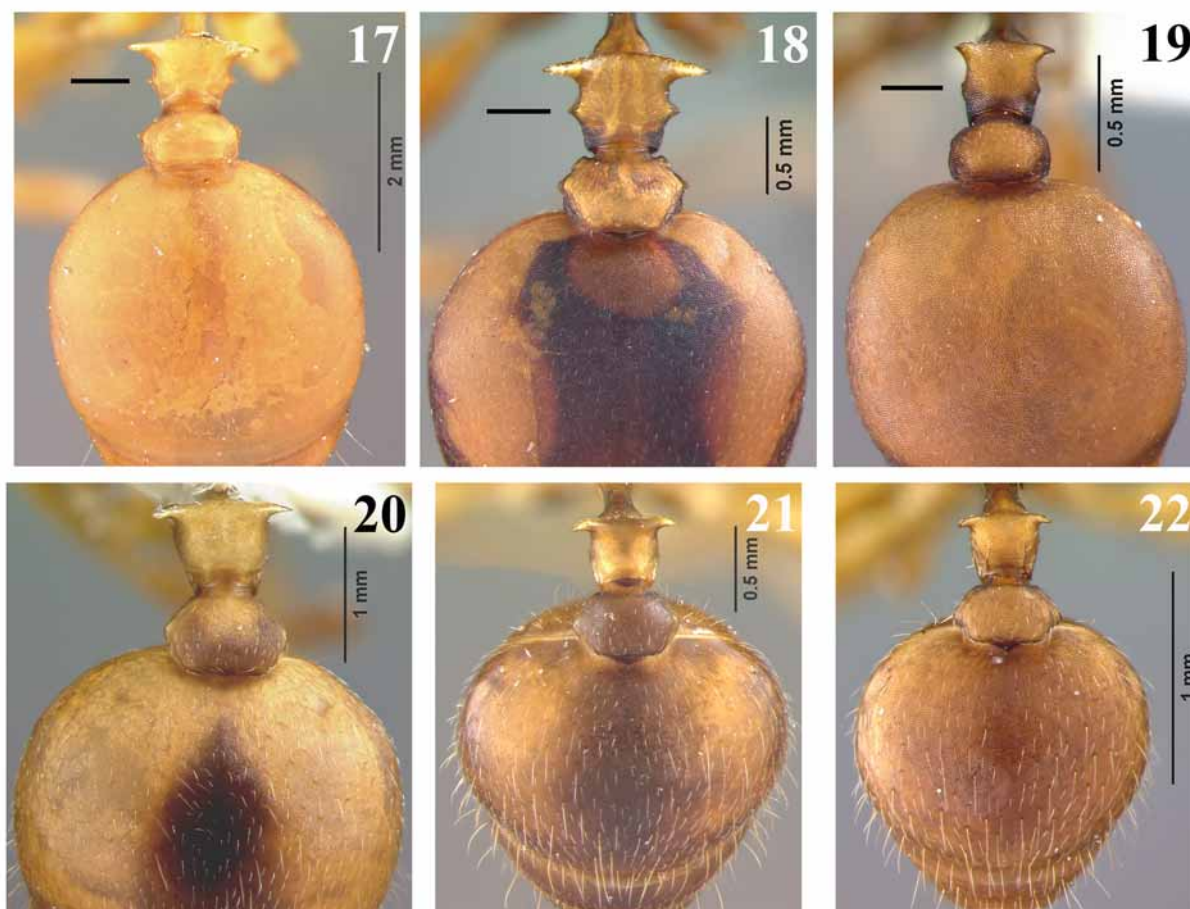


tate and with appressed hairs. Posterior margin of postpetiole, in lateral view, angulate. Dorsum of first gastral segment mainly with subdecumbent to decumbent hairs in addition to some appressed hairs.



**FIGURES 17–22.** Automontage photographs contrasting the waist segments and the dorsum of the first gastral segment of *Daceton armigerum* (17–19) and *Daceton boltoni* (20–22).

**Paratype workers.** Measurements (mm): EL 0.31–0.79, GL 1.69–3.82, HL 1.08–3.57, HW 1.17–4.13, ML 0.66–2.83, PL 0.67–1.58, PPL 0.24–0.60, PSL 0.28–1.20, PW 0.95–3.60, SL 0.74–2.11, TL 5.68–15.9, WL 1.34–3.55. Indexes: CI 106–116, MI 61–79, PI 41–52, PSI 21–40, SI 51–74, (29 measured).

Holotype worker, **Peru:** Loreto, Iquitos, ACTS Field Station, Canopy Walkway, 03°15'00"S 72°55'12"W, 20–24.iii.2006 (*F. Azorsa*). [Deposited in MUSM.]

Paratypes, 14 workers with same data as holotype; 15 workers, **Brazil:** Amazonas, Hwy ZF 2, Km 19, ca 60 Km N. Manaus, 02°30'S 60°15'W, 16.viii.1979, Terra Firma (*T.L. Erwin et al.*). [Deposited in BMNH (1), IAvH (1), ICN (1), MCZC (2), MZSP (2), MUSM (6), USNM (16).]

**Non-paratypic material examined.** 6 workers, **Brazil:** Amazonas, Manaus, Reserva 41 WWF, iii.1992 (*F.P. Benton*) [CPDC].

Gyne and male. Unknown.

**Range.** This species is known to occur in Iquitos, Peru, and Manaus, Brazil.

**Etymology.** It gives us great pleasure to name this ant in honor of Mr. Barry Bolton for his extensive contributions to the study of ant taxonomy and, especially, to the taxonomy of the tribe Dacetini. His worldwide revision of the tribe Dacetini is a monumental, well-documented work containing well-executed SEM micrographs and a very user-friendly taxonomical key that facilitates identification of the many miniscule, curious species of the tribe.