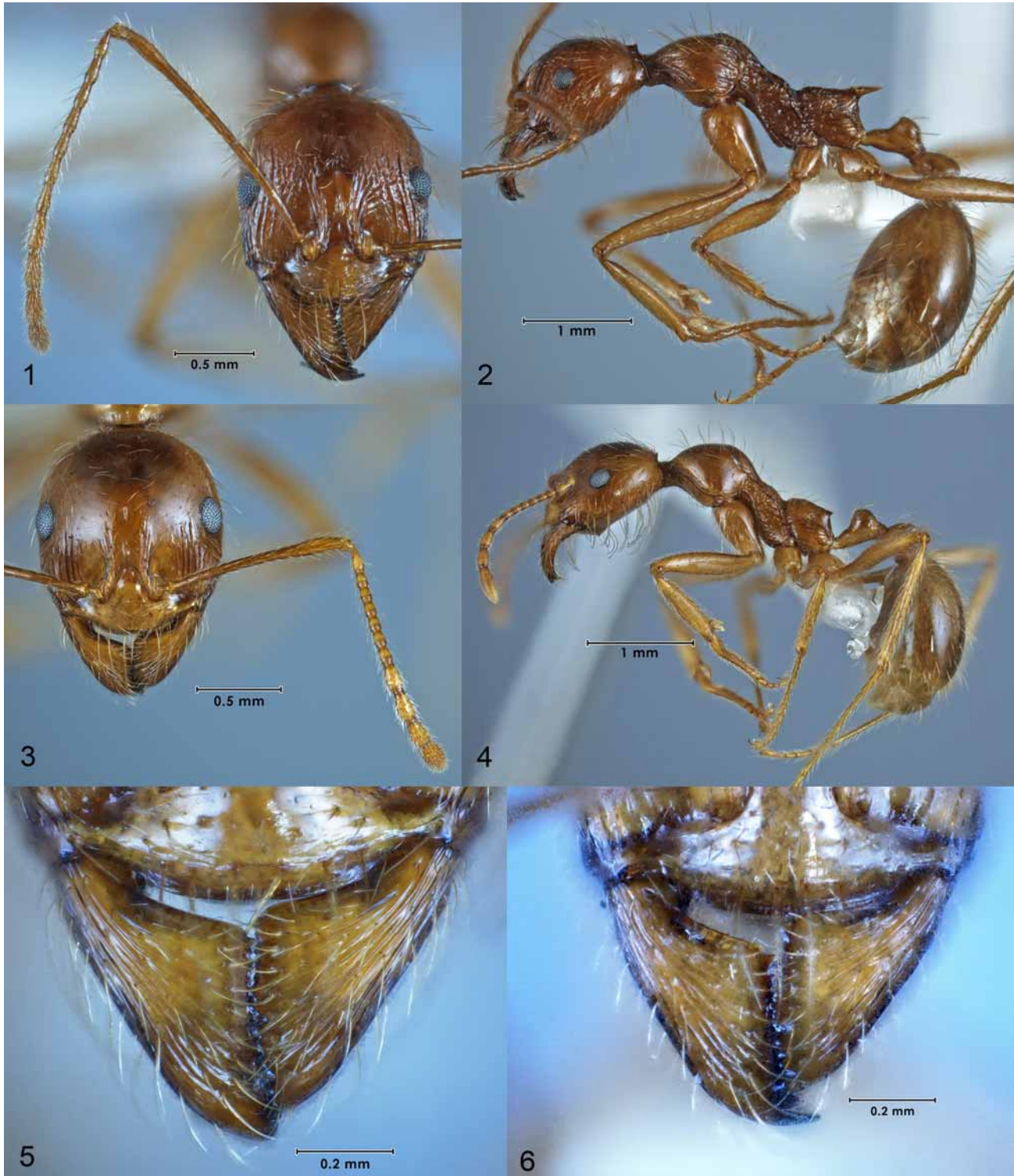


Rolleston (Lowery,B.B.); Koah (Wheeler,W.M.); Mareeba, 3km along Davies Ck. Road (Lowery,B.B.); Munday (Lowery,B.B.); vic. Mt. Garnet (Taylor,R.W.).

Comments. This is a fairly common and widely distributed Queensland species (Fig. 24) which had previously been confused with *A. pythia*. However, it differs significantly from *A. pythia* and there is little chance of confusing these two species. *Aphaenogaster barbara* occurs in drier forested habitats such as dry sclerophyll and savannah woodlands. Nests are typical for the genus with large funnel-shaped entrances.



FIGURES 1–6. *A. barbara* sp. n., holotype worker: Fig. 1, front of head; Fig. 2, lateral view of body. *A. barbigula* Wheeler, worker: Fig. 3, front of head; Fig. 4, lateral view of body. Mandibles: Fig. 5, *A. barbigula* Wheeler; Fig. 6, *A. poultoni* Crawley.