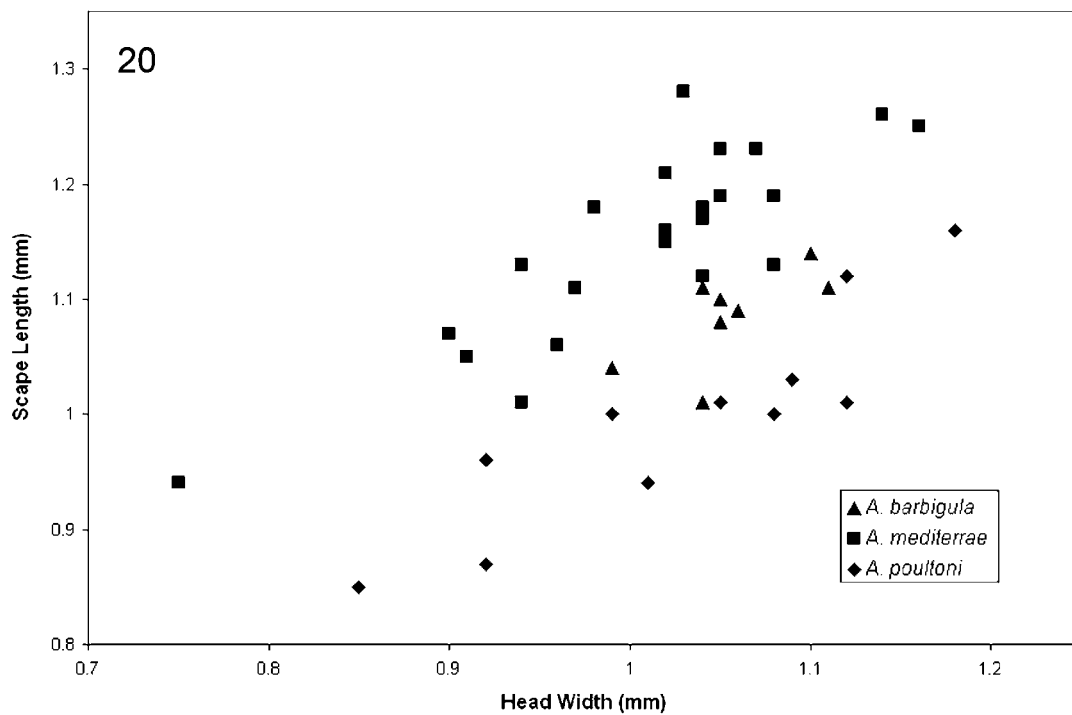
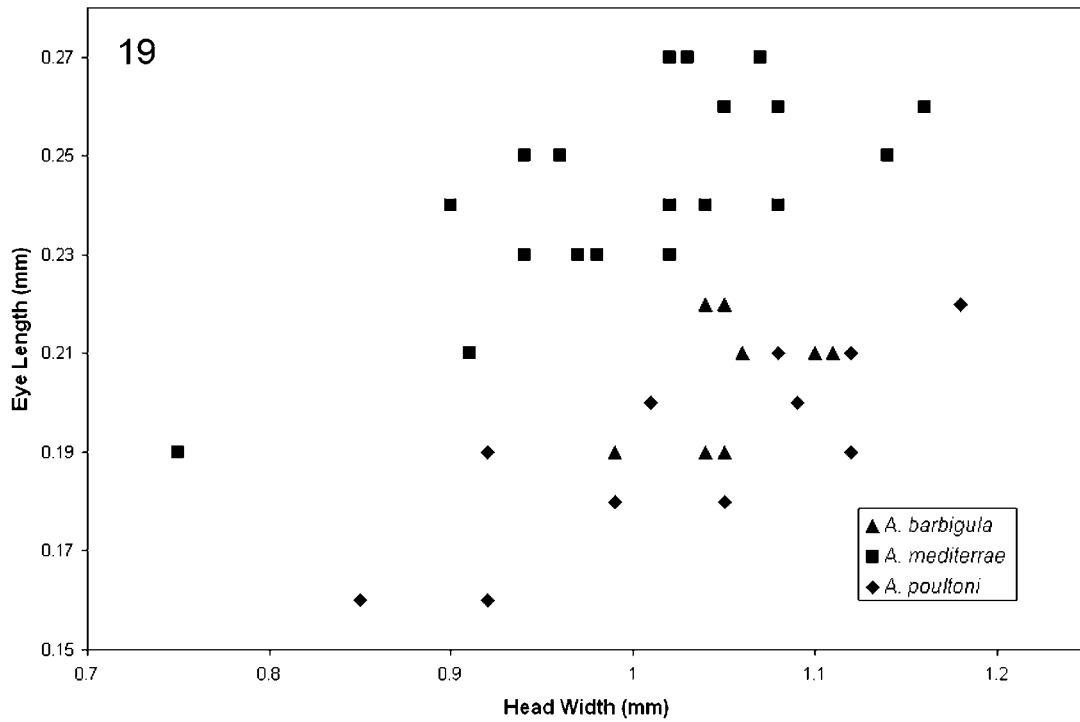


and lateral margins forming a continuous surface). Hairs on venter of head randomly distributed and not forming a distinct psammophore. Mandibular sculpture composed of regularly sized striations. Shorter erect hairs on mesosomal dorsum (especially those on mesonotum) with blunt tips. Propodeal spines intermediate in length. Dorsal surfaces of propodeum and propodeal spines connected through a gentle concavity (so that the base of each spine is at approximately the same level as the dorsal surface of the propodeum). Petiolar node (in dorsal view) approximately square.



**FIGURES 19–20.** Fig. 19, eye length versus head width measurements for *A. barbigula*, *A. mediterrae* and *A. poultoni*; Fig. 20, scape length versus head width measurements for *A. barbigula*, *A. mediterrae* and *A. poultoni*.