

Sting apparatus. Spiracular plate subrectangular; dorsal notch absent; spiracle relatively wide; anterior apodeme narrow; ventral edge weakly pronounced. Quadrate plate with the dorsal region as broad as ventral region; dorsal margin convex; posterior margin complete. Oblong plate with posterior apodeme long. Triangular plate longer than broad. Gonostylus with body virtually fused to the oblong plate, with a single sclerotized anterior segment. Anal plate small and subtriangular. Lancet short, with functional valves; dorsal and ventral margins converging towards the apex. Sting sclerotized, with acute apex; body of bulb slender in lateral view. Furcula with dorsal arm fused to the base of the sting bulb.

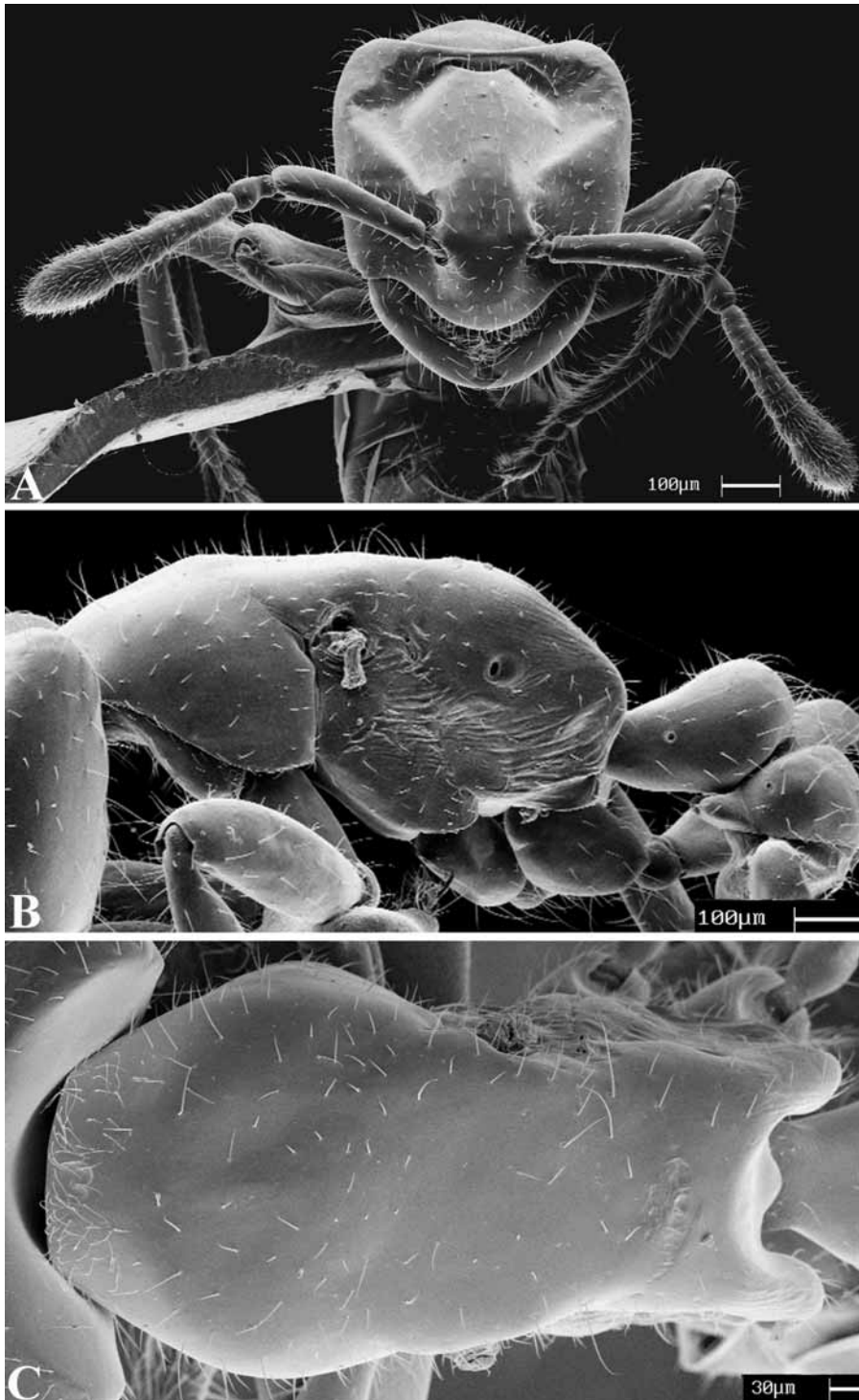


FIGURE 1. SEM images of *Tropidomyrmex elianae* gen. & sp. n. paratype gyne. A, head in full face view; B, mesosoma in lateral view; C, mesosoma in dorsal view.