

petiole and postpetiole. Antennal scape and pedicel with only scattered long hairs, while the other segments are covered by minute, dense, pubescence.

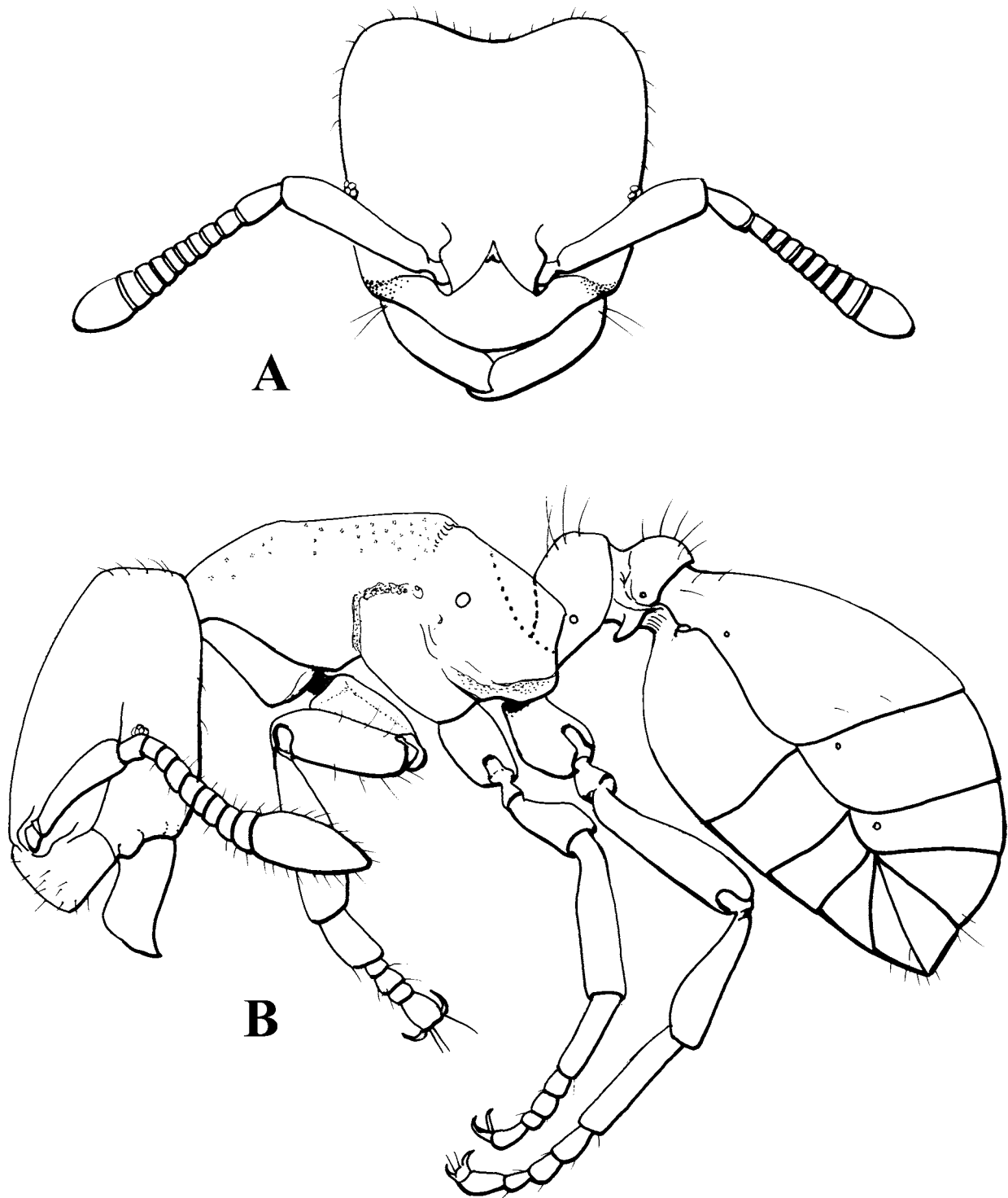


FIGURE 9. Line drawings of *Tropidomyrmex elianae* gen. & sp. n. worker from Tocantins. A, head in full face view; B, habitus.

Head broader between the superior margins of the bulging compound eyes; posterior margin flat. Mandibles relatively well developed and gently curved ventrally, with a single, acute tooth at apex. Clypeus narrower than in the conspecific gynes, extending posteriorly between the antennal insertions; median area of clypeus elevated, swollen, diamond shaped, with rounded corners, its posterior margin produced and