

and dense along the anterior clypeal border. Legs with abundant, rather long, stout subreclinate hairs; antennae and mandibles densely clothed with short, fine appressed hairs.

Color dark brown; petiole and postpetiole lighter and more yellowish, legs and antennae sordid yellow, appendages of petiole and postpetiole yellowish, of ventral surface of gaster, more whitish.

Holotype worker, with the four paratypes described below, taken in the garden of the Instituto Miguel Lillo, Tucumán, Argentina. Holotype and two paratypes to be returned to Dr. Nicolás Kusnezov, the collector of these specimens, for inclusion in the collections of the Instituto on whose grounds they were taken. Remaining two paratypes deposited in MCZ and USNM.

*Paratypes*.—The four workers sent with the holotype show variation of visible degree only in slight differences of size and proportion. Total length 1.88–2.03 mm., head length 0.51–0.55 mm., alitrunk length 0.46–0.53 mm., cephalic index 96–98, mandibulo-cephalic index 19–20.

The female caste is unknown. Males taken at Tucumán more recently, but not associated with workers or females, are possibly of this species. When association is certified, these specimens should be described—but certainly not before.

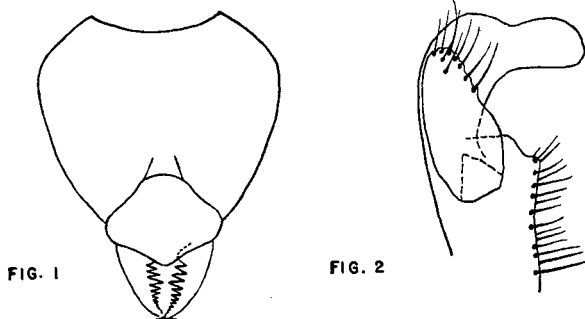


Fig. 1. *Glamyromyrmex (Chelystruma) lilloana* new subgenus and species, head of worker, facial view. (Tucumán, Argentina.)

Fig. 2. *Glamyromyrmex* s. str. *beebei* Wheeler, volsella of male genitalia. (Pará, Brazil.)