

EL Eye length. Maximum length of the eye as measured normally in oblique view of the head to show the full surface of the eye.

PnW Pronotum width. Maximum width of the pronotum in dorsal view.

MsL Mesosoma length. Maximum length of the mesosoma, measured in lateral view, diagonally from cervical shield to posterolateral propodeal edge.

PtH Petiole height. Maximum height of the petiole, measured in lateral view as a straight line from the bottom edge of the petiole, perpendicular to the petiolar apex (see Sorger and Zettel, 2011: Fig. 2).

PtL Petiole length. Measured in lateral view along the antero-dorsal outline of the petiole from the small antero-apical tooth to the apex (see Sorger and Zettel, 2011: Fig. 2).

PtW Petiole width. Maximum width of the petiole in dorsal view.

TL Total length. Length of the entire ant measured in dorsal view with the head stretched out, from the anterior margin of the mandible to the apex of the gaster.

CI Cephalic index:  $HW/HL \times 100$ .

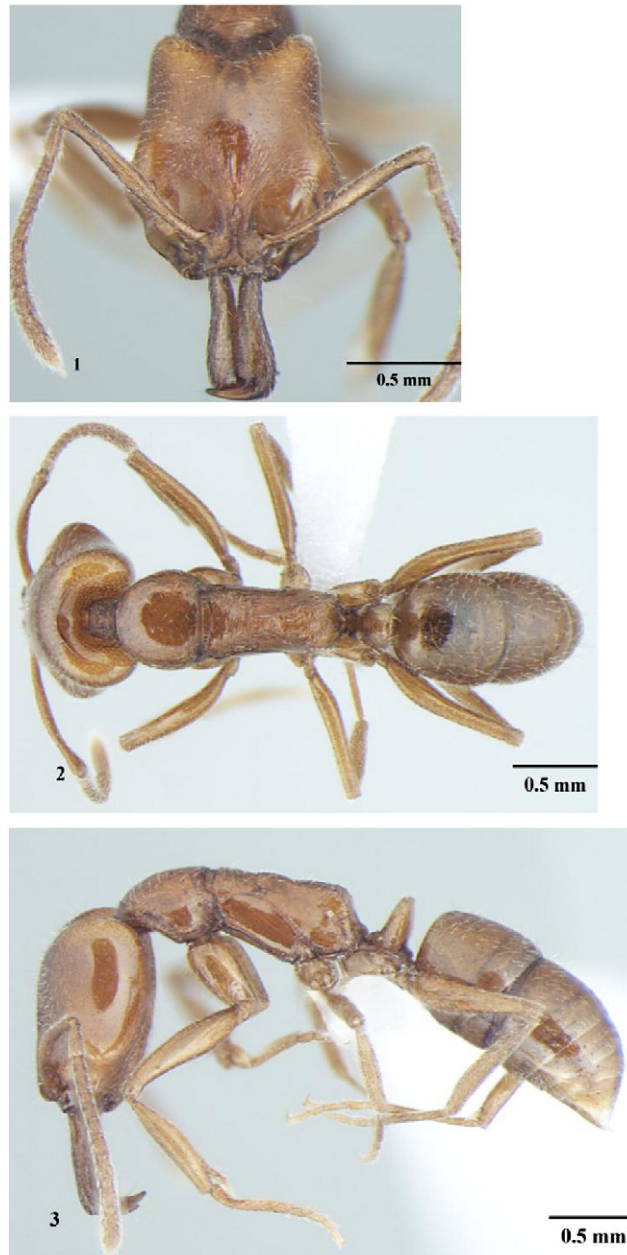
SI Scape index:  $SL/HW \times 100$ .

Mdl Mandible index:  $ML/HL \times 100$ .

### Systematic accounts

*Anochetus cryptus* sp. nov. (Figs. 1–6)

*Type material.* Holotype worker. India, Jammu and Kashmir, Manda, 32.7496°N 74.8673 °E, 500 m, 15 July, 2009, soil core. Paratypes: 3 workers and 1 gyne, with same data as holotype; 2 workers, India, Himachal Pradesh, Chanaur, 31.9067°N 76.1428°E, 600 m, 5 June,



Figs. 1–3. Worker; *Anochetus cryptus* sp. nov., 1. head in full-face view; 2. dorsal view; 3. lateral view.