

**Eye length (EL):**

Maximum length of eye as measured normally in oblique view of the head to show full surface of eye.

**Scape length (SL):**

Maximum length of the scape excluding the basal neck and condyle.

**Weber length (WL):**

Weber's length of mesosoma, measured in lateral view from the anterior surface of the pronotum (excluding the collar) to the posterior margin of the propodeal lobes.

**Petiole length (PL):**

Maximum longitudinal distance in lateral view between the anterior and posterior extensions of the petiolar node, excluding the anterior and posterior condyles.

**Petiole height (PH):**

In lateral view, the distance from the ventrum of the petiolar sternite to the apex of the petiolar tergite, taken as a vertical measurement perpendicular to the longitudinal axis of the petiole.

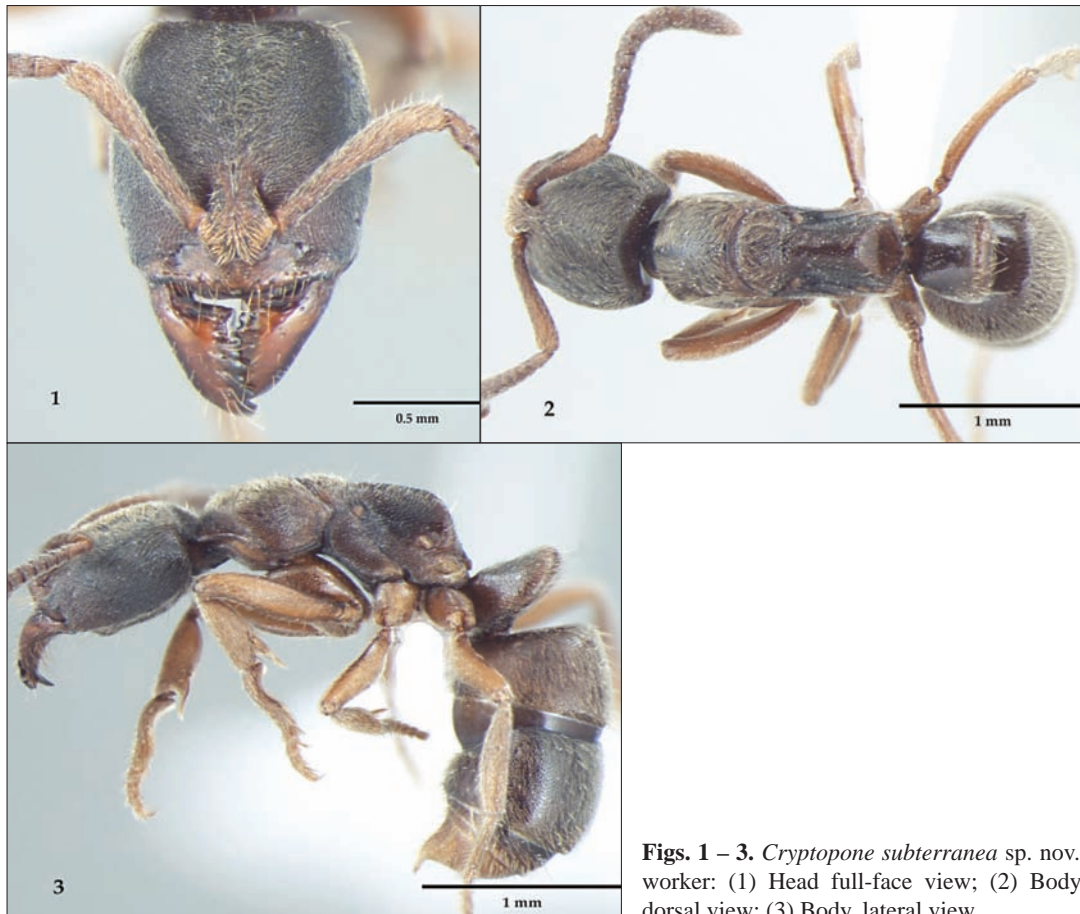
**Gaster length (GL):**

Length of the gaster in lateral view from the anteriormost point of first gastral segment to the posteriormost point of the last segment (excluding sting).

Total length (TL):  $HL + WL + PL + GL$

Cephalic index (CI):  $(HW/HL) \times 100$

Scape index (SI):  $(SL/HW) \times 100$



**Figs. 1 – 3.** *Cryptopone subterranea* sp. nov., worker: (1) Head full-face view; (2) Body, dorsal view; (3) Body, lateral view.